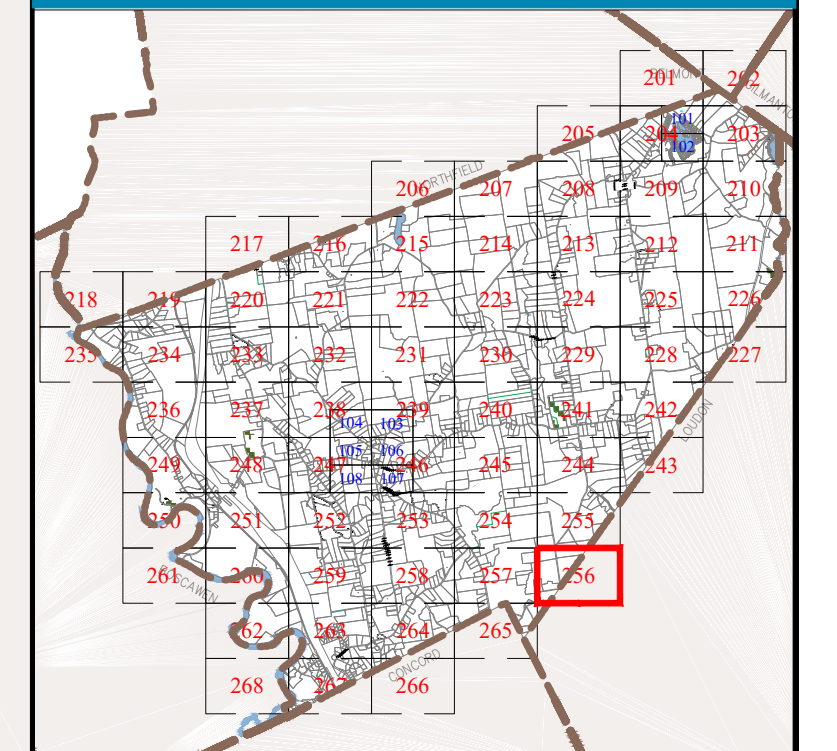


Town of
CANTERBURY
 Merrimack County
 New Hampshire

LEGEND

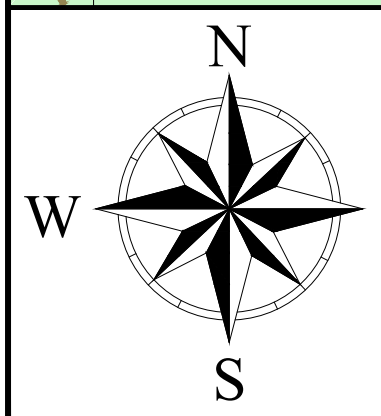
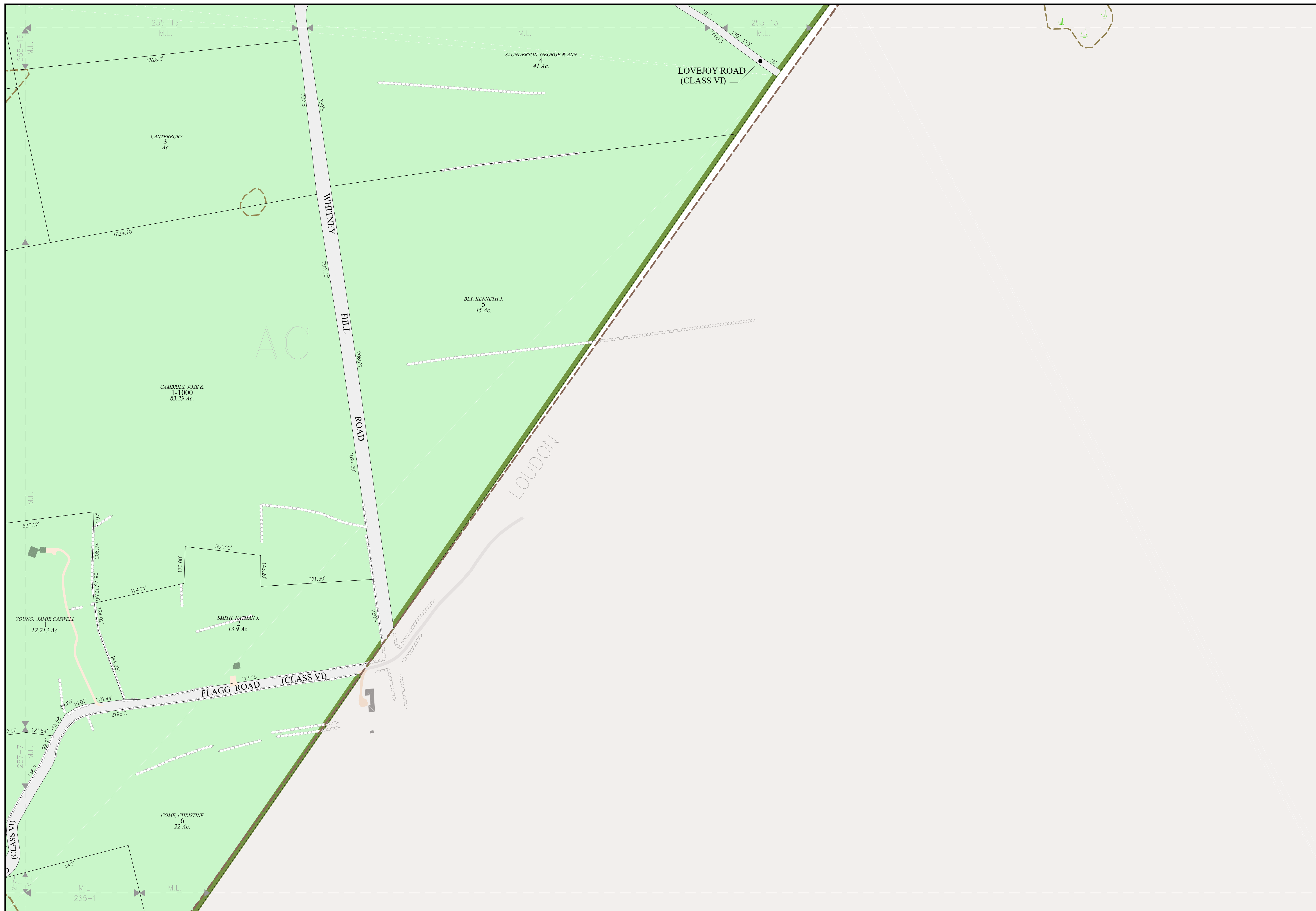
Lot-Sub	12-1
Acreage	200 AcS
S-Survey C-Calculated	
Dimensions (Feet)	150.00'
Private & ROW Access	
River	
Wetland	
Lake or Pond	
Transmission Line	
Conservation Easement	
Exempt Property	
Town Owned Land	
Open Space	
Structure	
ZONING	
Residential	
Rural	
Agricultural-Conservation	
Commercial	
Industrial	
Natural Resource	
Center Historic District	
Shaker Historic Overlay District	
Shaker Village Museum Preservation District	

MAP INDEX



MAP NUMBER

256

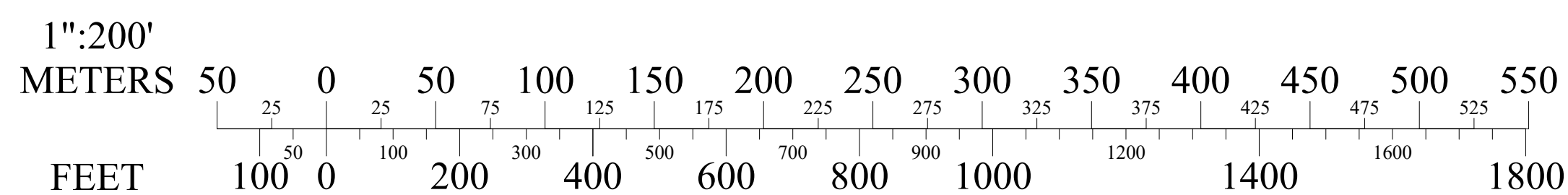


THE HORIZONTAL DATUM IS THE NEW HAMPSHIRE STATE PLANE COORDINATE SYSTEM, NAD 83.

FOR ASSESSMENT PURPOSES
NOT TO BE USED FOR CONVEYANCES

REVISED APRIL 1, 2023

SCALE



MAP NOTES