



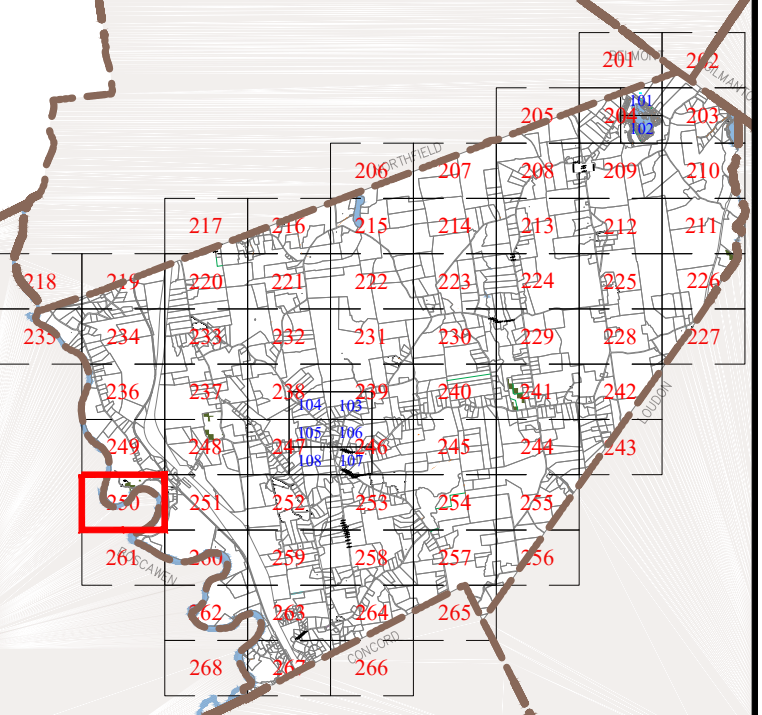
Phone 603 798-4419  
 Fax 603 798-4263  
 A Division of  
**Avitar Associates**  
 of New England, Inc.  
 www.avitarassociates.com  
 TerraMap@avitarassociates.com

Town of  
**CANTERBURY**  
 Merrimack County  
 New Hampshire

**LEGEND**

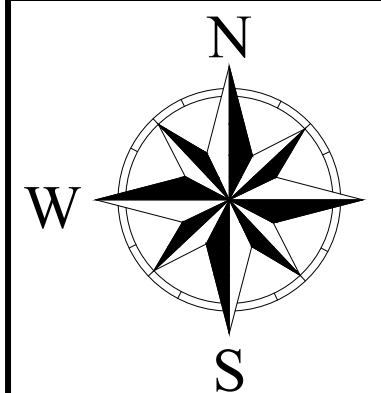
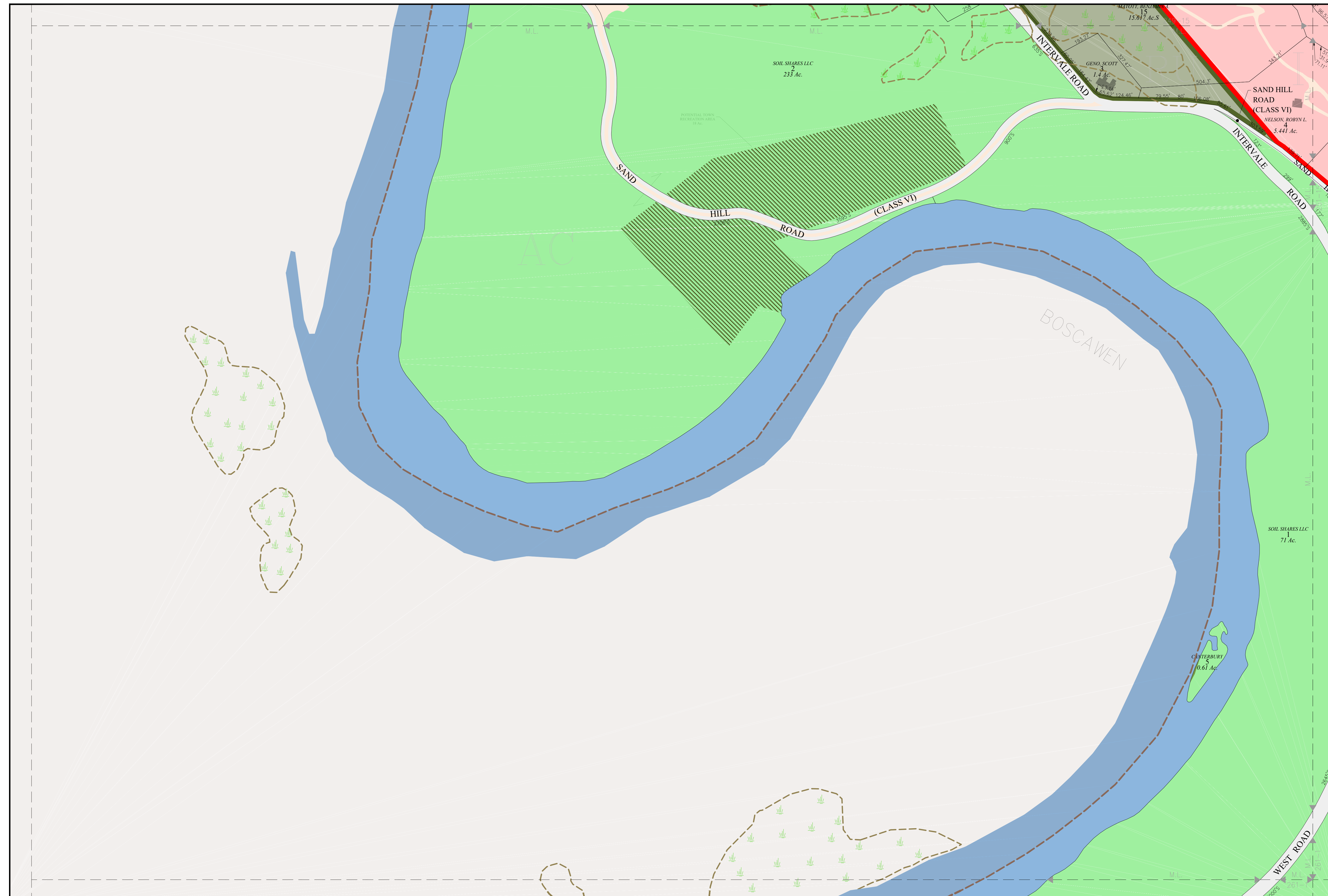
- |                       |         |
|-----------------------|---------|
| Lot-Sub               | 12-1    |
| Acreage               | 200 AcS |
| S-Survey C-Calculated |         |
| Dimensions (Feet)     | 150.00' |
| Private & ROW Access  |         |
| River                 |         |
| Wetland               |         |
| Lake or Pond          |         |
| Transmission Line     |         |
| Conservation Easement |         |
| Exempt Property       |         |
| Town Owned Land       |         |
| Open Space            |         |
| Structure             |         |
- ZONING**
- |   |  |
|---|--|
| Residential                                 |  |
| Rural                                       |  |
| Agricultural-Conservation                   |  |
| Commercial                                  |  |
| Industrial                                  |  |
| Natural Resource                            |  |
| Center Historic District                    |  |
| Shaker Historic Overlay District            |  |
| Shaker Village Museum Preservation District |  |

**MAP INDEX**



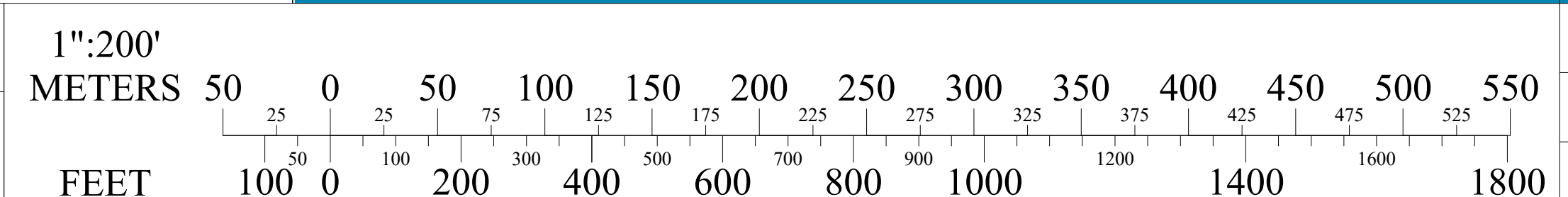
**MAP NUMBER**

**250**



THE HORIZONTAL DATUM IS THE NEW HAMPSHIRE STATE  
 PLANE COORDINATE SYSTEM, NAD 83.  
 FOR ASSESSMENT PURPOSES  
 NOT TO BE USED FOR CONVEYANCES  
**REVISED APRIL 1, 2023**

**SCALE**



**MAP NOTES**