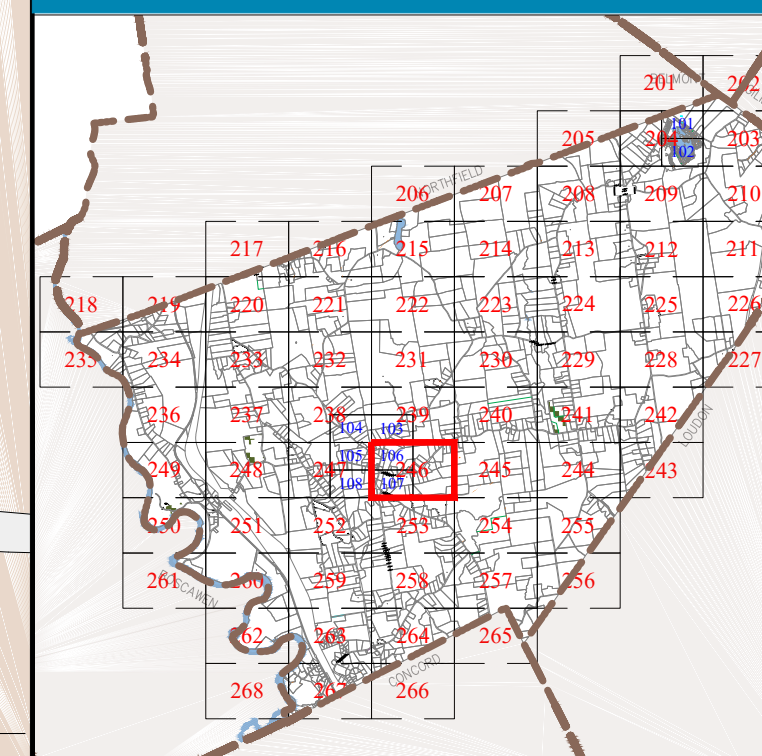


Town of
CANTERBURY
 Merrimack County
 New Hampshire

LEGEND

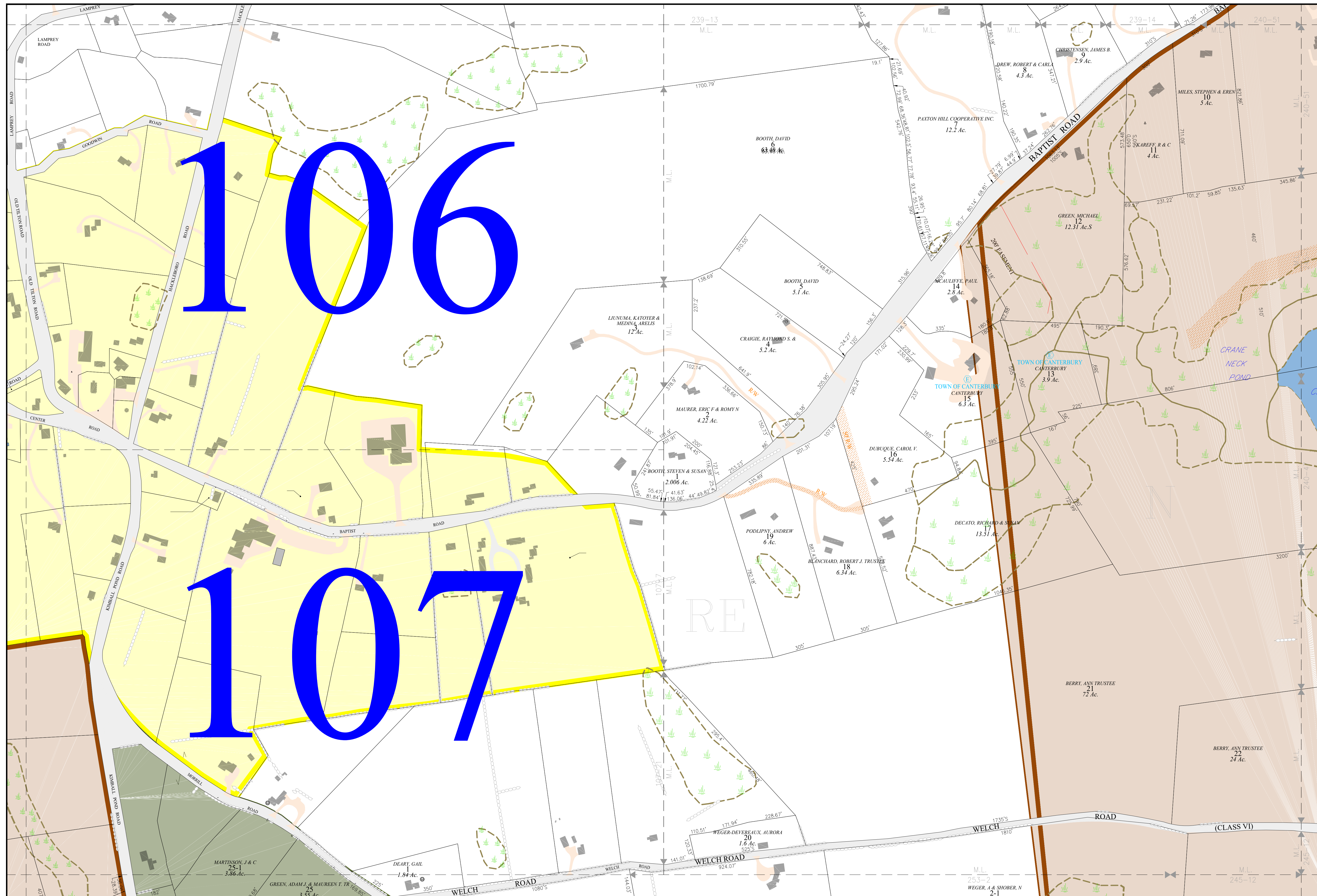
- Lot-Sub 12-1
 - Acreage 200 AcS
 - S-Survey C-Calculated
 - Dimensions (Feet) 150.00'
 - Private & ROW Access
 - River
 - Wetland
 - Lake or Pond
 - Transmission Line
 - Conservation Easement
 - Exempt Property
 - Town Open Land
 - Open Space
 - Structure
- ZONING**
- Residential
 - Rural
 - Agricultural-Conservation
 - Commercial
 - Industrial
 - Natural Resource
 - Center Historic District
 - Shaker Historic Overlay District
 - Shaker Village Museum Preservation District

MAP INDEX

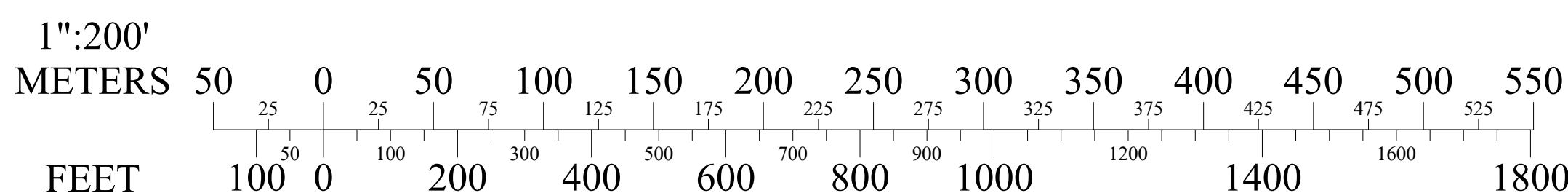


MAP NUMBER

246



SCALE



MAP NOTES

THE HORIZONTAL DATUM IS THE NEW HAMPSHIRE STATE PLANE COORDINATE SYSTEM, NAD 83.

FOR ASSESSMENT PURPOSES
 NOT TO BE USED FOR CONVEYANCES

REVISED APRIL 1, 2023

