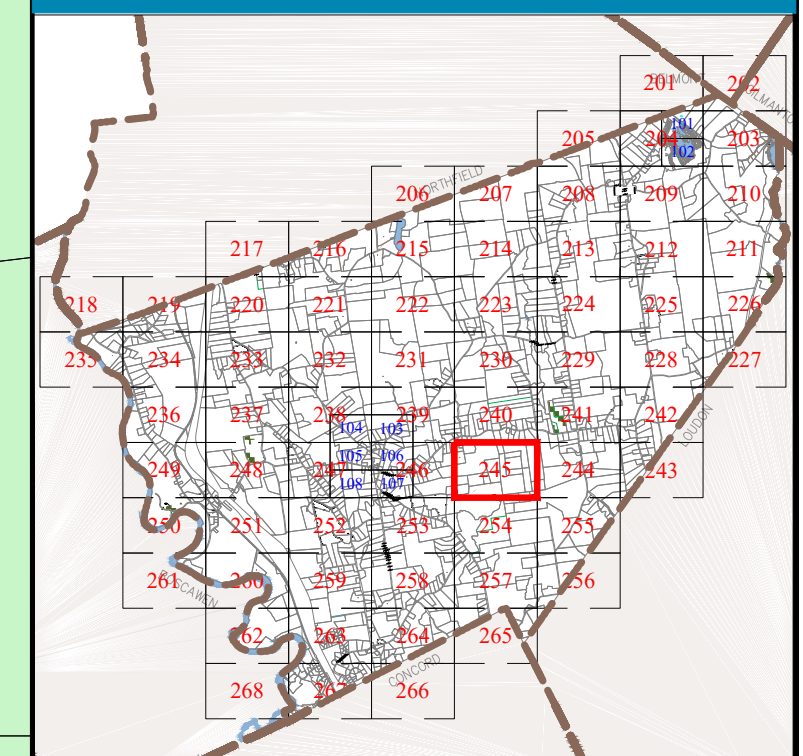


**Town of**  
**CANTERBURY**  
 Merrimack County  
 New Hampshire

**LEGEND**

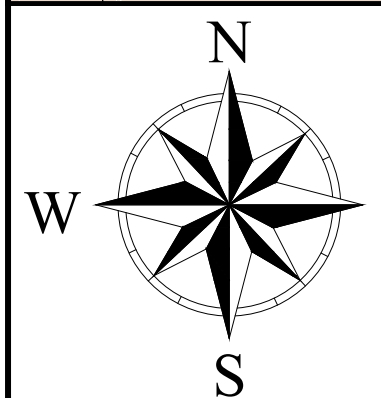
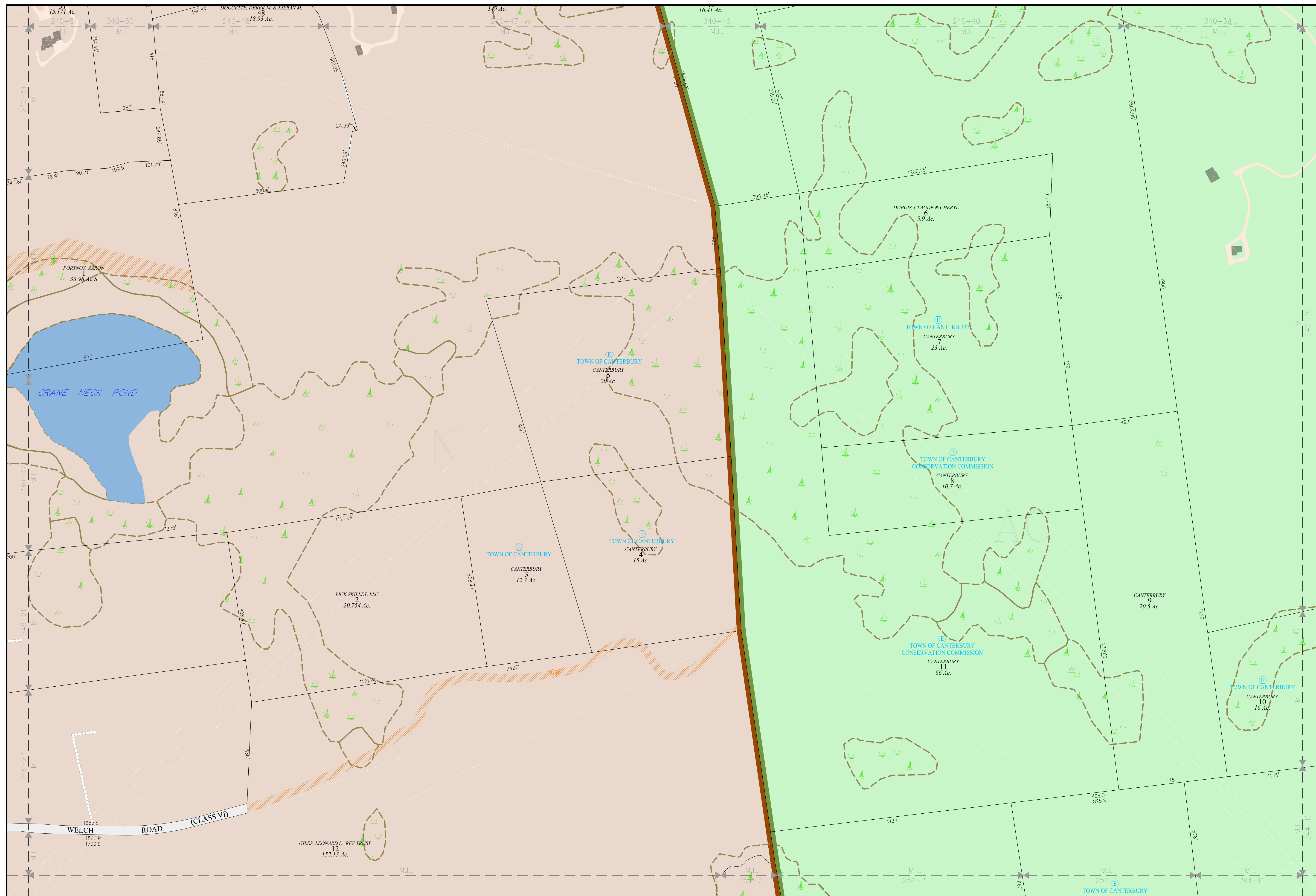
- |                       |                   |
|-----------------------|-------------------|
| Lot-Sub               | 12-1              |
| Acreage               | 200 AcS           |
| S-Survey C-Calculated | Dimensions (Feet) |
| Private & ROW Access  | 150.00'           |
| River                 |                   |
| Wetland               |                   |
| Lake or Pond          |                   |
| Transmission Line     |                   |
| Conservation Easement |                   |
| Exempt Property       |                   |
| Town Owned Land       |                   |
| Open Space            |                   |
| Structure             |                   |
- ZONING**
- |   |  |
|---|--|
| Residential                                 |  |
| Rural                                       |  |
| Agricultural-Conservation                   |  |
| Commercial                                  |  |
| Industrial                                  |  |
| Natural Resource                            |  |
| Center Historic District                    |  |
| Shaker Historic Overlay District            |  |
| Shaker Village Museum Preservation District |  |

**MAP INDEX**



**MAP NUMBER**

245

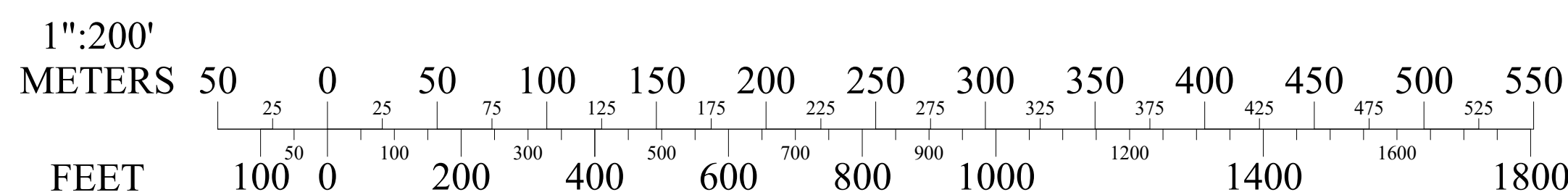


THE HORIZONTAL DATUM IS THE NEW HAMPSHIRE STATE PLANE COORDINATE SYSTEM, NAD 83.

FOR ASSESSMENT PURPOSES  
NOT TO BE USED FOR CONVEYANCES

**REVISED APRIL 1, 2023**

**SCALE**



**MAP NOTES**