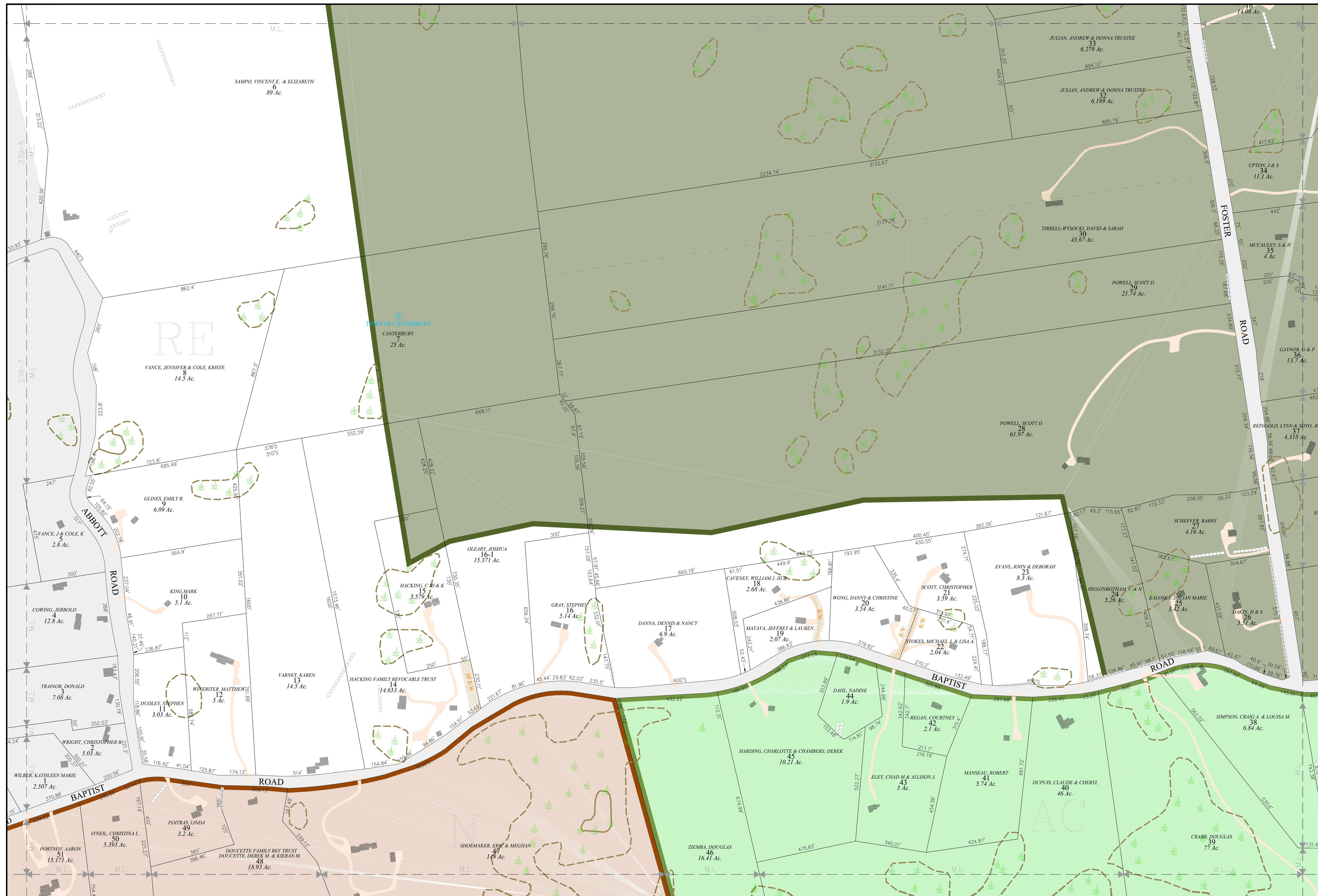


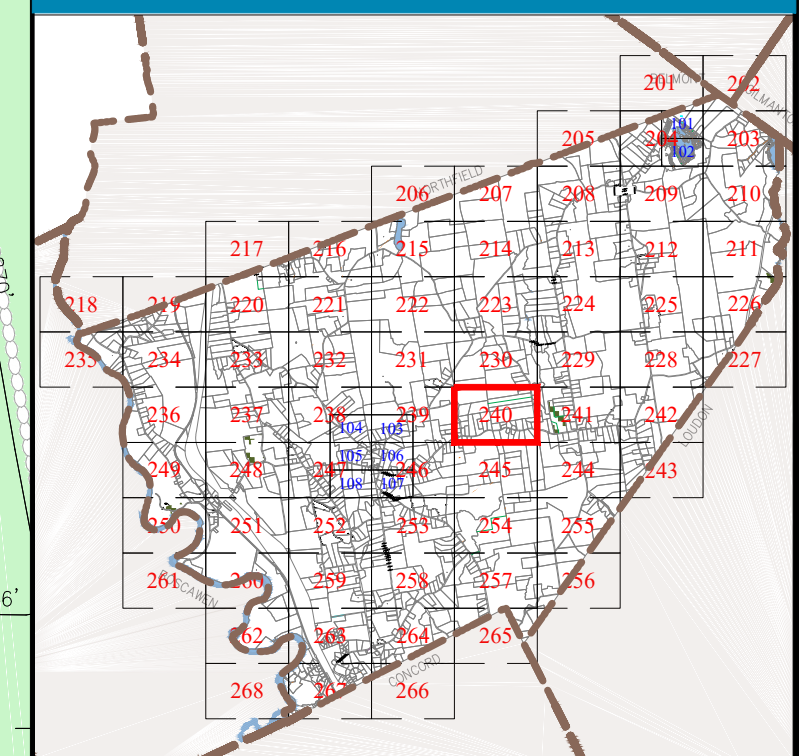
**Town of**  
**CANTERBURY**  
 Merrimack County  
 New Hampshire

**LEGEND**

- |   |              |
|---|--------------|
| Lot-Sub Acreage                         | 12-1 200 AcS |
| S-Survey C-Calculated Dimensions (Feet) | 150.00'      |
| Private & ROW Access                    |              |
| River                                   |              |
| Wetland                                 |              |
| Lake or Pond                            |              |
| Transmission Line                       |              |
| Conservation Easement                   |              |
| Exempt Property                         |              |
| Town Owned Land                         |              |
| Open Space                              |              |
| Structure                               |              |
- ZONING**
- |   |  |
|---|--|
| Residential                                 |  |
| Rural                                       |  |
| Agricultural-Conservation                   |  |
| Commercial                                  |  |
| Industrial                                  |  |
| Natural Resource                            |  |
| Center Historic District                    |  |
| Shaker Historic Overlay District            |  |
| Shaker Village Museum Preservation District |  |

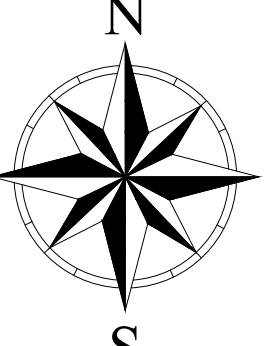


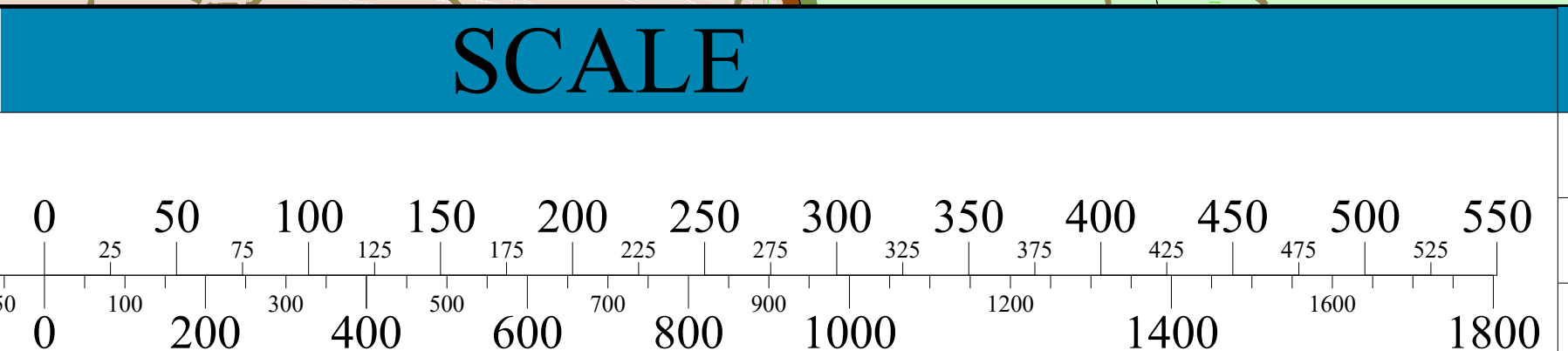
**MAP INDEX**



**MAP NUMBER**

240


 THE HORIZONTAL DATUM IS THE NEW HAMPSHIRE STATE PLANE COORDINATE SYSTEM, NAD 83.  
 FOR ASSESSMENT PURPOSES NOT TO BE USED FOR CONVEYANCES  
**REVISED APRIL 1, 2023**



**MAP NOTES**