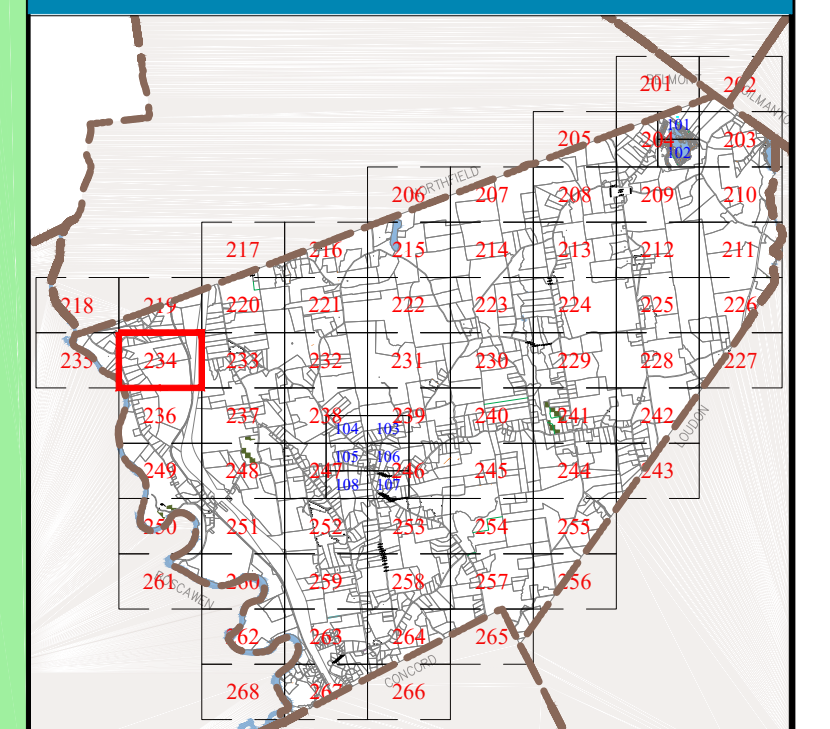


Town of
CANTERBURY
 Merrimack County
 New Hampshire

LEGEND

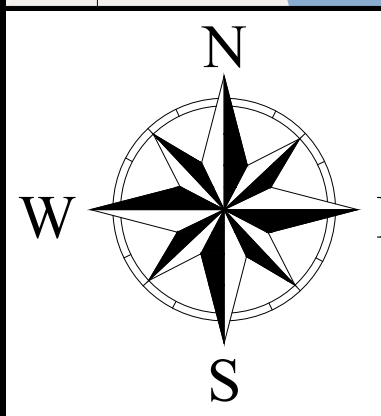
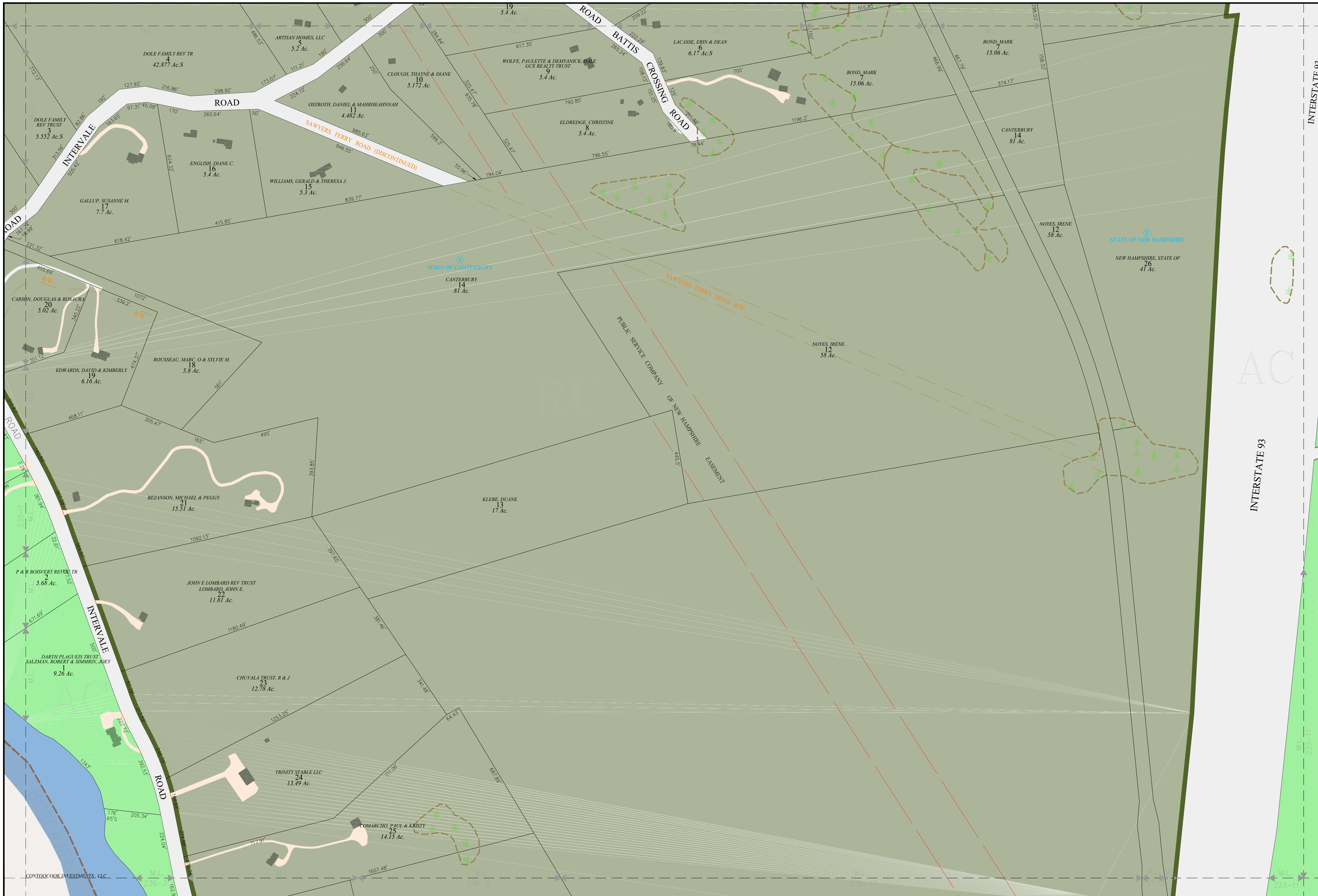
- | | |
|-----------------------|---------|
| Lot-Sub Acreage | 12-1 |
| S-Survey C-Calculated | 200 AcS |
| Dimensions (Feet) | 150.00' |
| Private & ROW Access | |
| River | |
| Wetland | |
| Lake or Pond | |
| Transmission Line | |
| Conservation Easement | |
| Exempt Property | |
| Town Owned Land | |
| Open Space | |
| Structure | |
- ZONING**
- | | |
|---|--|
| Residential | |
| Rural | |
| Agricultural-Conservation | |
| Commercial | |
| Industrial | |
| Natural Resource | |
| Center Historic District | |
| Shaker Historic Overlay District | |
| Shaker Village Museum Preservation District | |

MAP INDEX



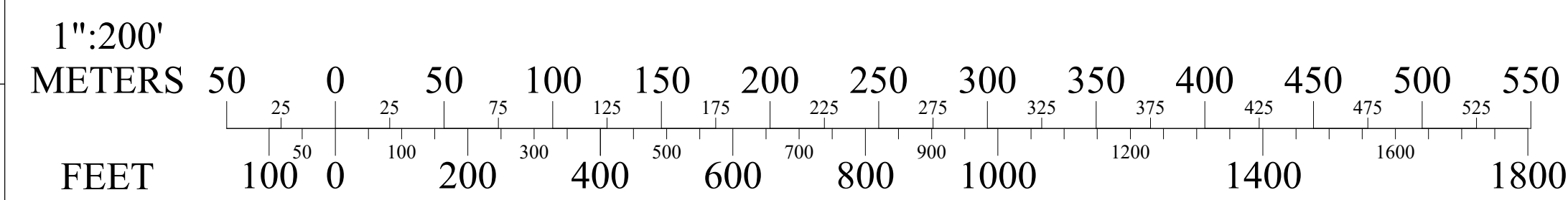
MAP NUMBER

234



THE HORIZONTAL DATUM IS THE NEW HAMPSHIRE STATE PLANE COORDINATE SYSTEM, NAD 83.
 FOR ASSESSMENT PURPOSES
 NOT TO BE USED FOR CONVEYANCES
REVISED APRIL 1, 2023

SCALE



MAP NOTES