

Town of

CANTERBURY

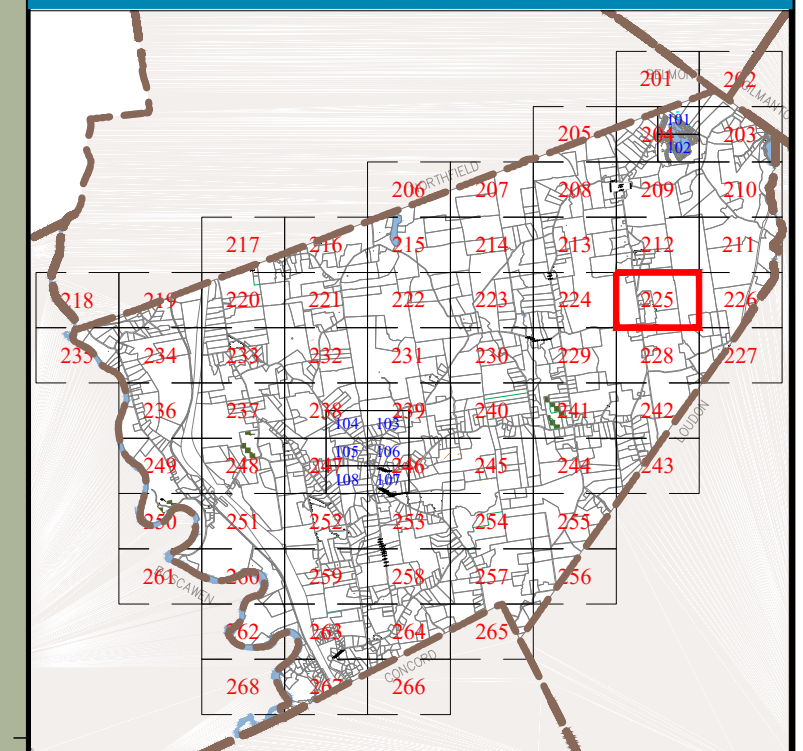
 Merrimack County

 New Hampshire

LEGEND

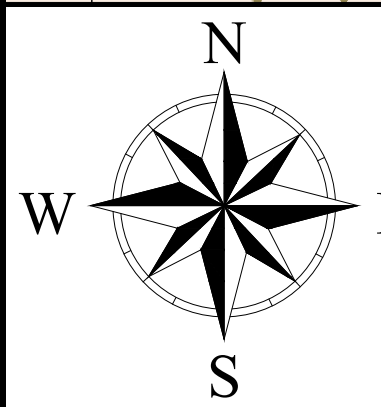
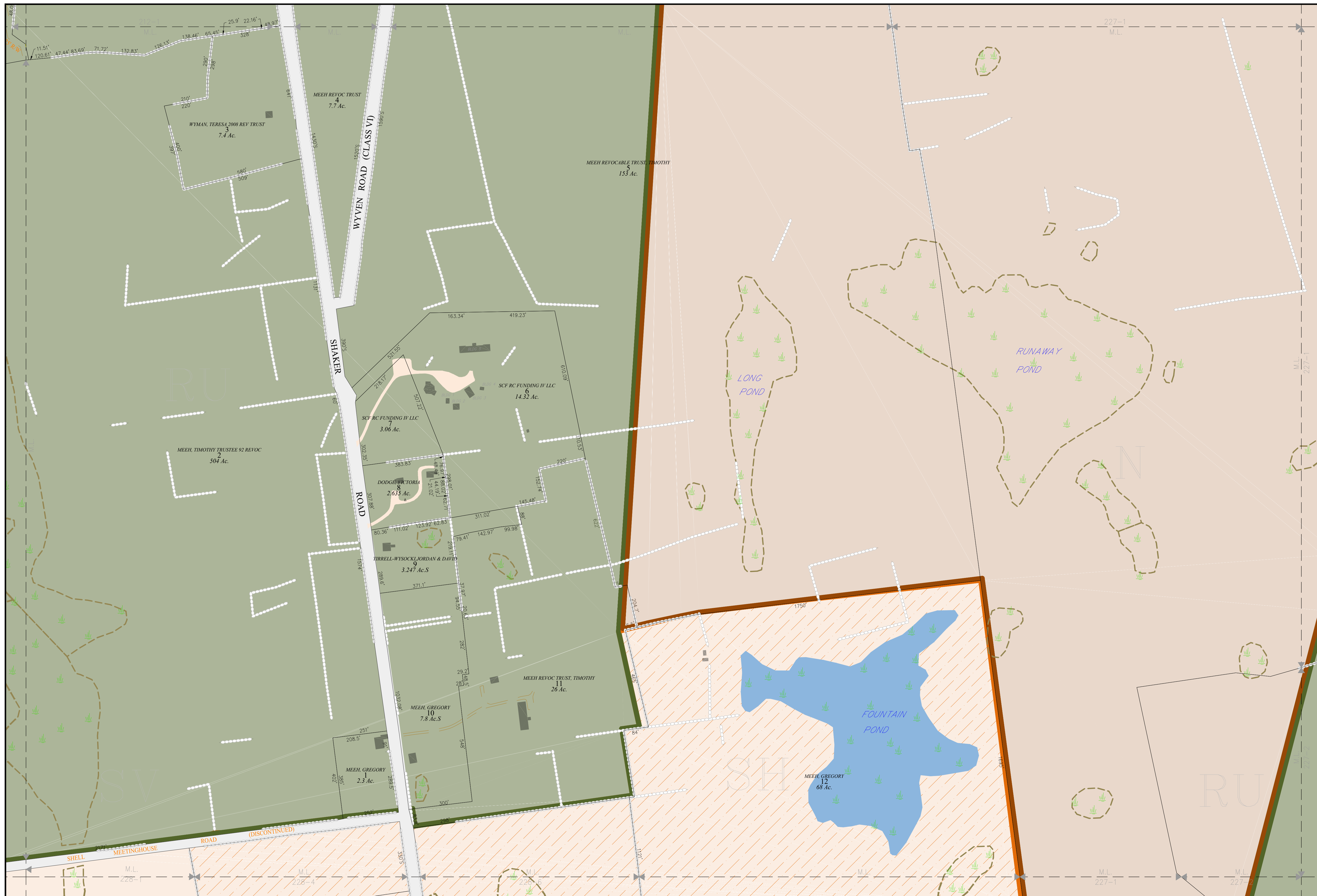
- | | |
|-----------------------|---------|
| Lot-Sub | 12-1 |
| Acreage | 200 AcS |
| S-Survey C-Calculated | |
| Dimensions (Feet) | 150.00' |
| Private & ROW Access | |
| River | |
| Wetland | |
| Lake or Pond | |
| Transmission Line | |
| Conservation Easement | |
| Exempt Property | |
| Town Owned Land | |
| Open Space | |
| Structure | |
-
- ZONING**
- | | |
|---|--|
| Residential | |
| Rural | |
| Agricultural-Conservation | |
| Commercial | |
| Industrial | |
| Natural Resource | |
| Center Historic District | |
| Shaker Historic Overlay District | |
| Shaker Village Museum Preservation District | |

MAP INDEX



MAP NUMBER

225

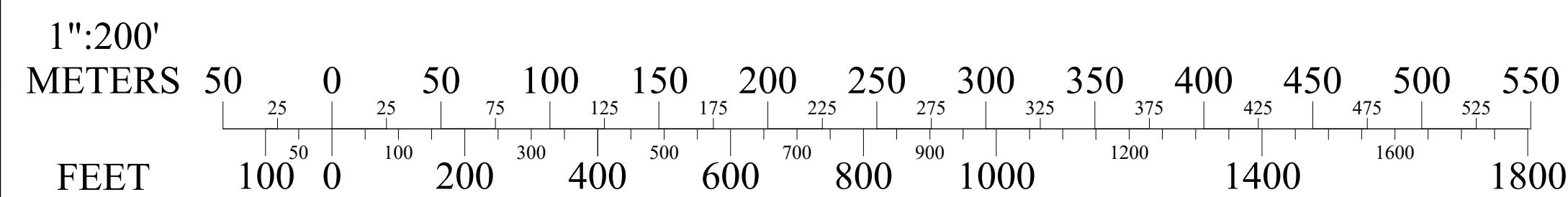


THE HORIZONTAL DATUM IS THE NEW HAMPSHIRE STATE PLANE COORDINATE SYSTEM, NAD 83.

FOR ASSESSMENT PURPOSES
NOT TO BE USED FOR CONVEYANCES

REVISED APRIL 1, 2023

SCALE



MAP NOTES