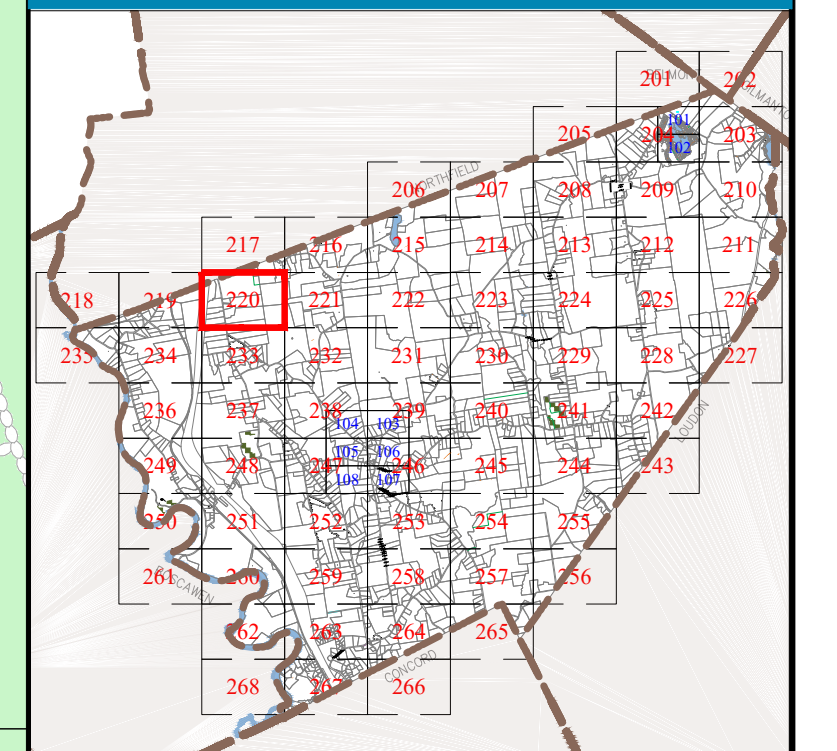


Town of
CANTERBURY
 Merrimack County
 New Hampshire

LEGEND

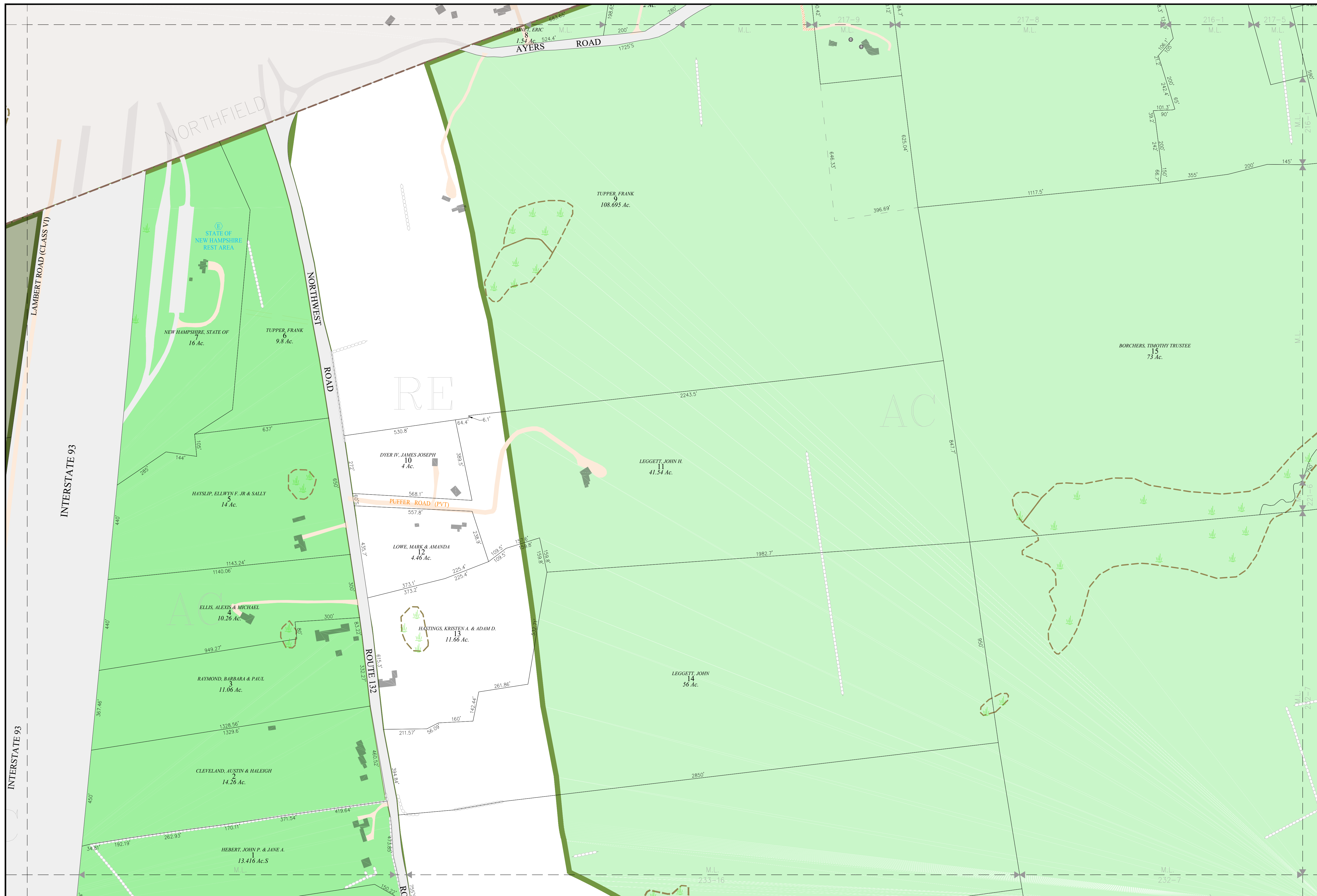
Lot-Sub	12-1
Acreage	200 AcS
S-Survey C-Calculated	
Dimensions (Feet)	150.00'
Private & ROW Access	
River	
Wetland	
Lake or Pond	
Transmission Line	
Conservation Easement	
Exempt Property	
Town Owned Land	
Open Space	
Structure	
ZONING	
Residential	
Rural	
Agricultural-Conservation	
Commercial	
Industrial	
Natural Resource	
Center Historic District	
Shaker Historic Overlay District	
Shaker Village Museum Preservation District	

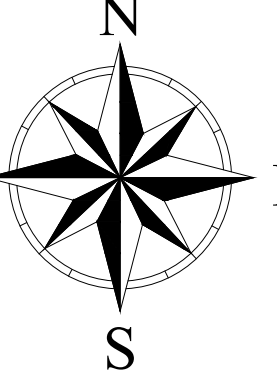
MAP INDEX



MAP NUMBER

220



	<p>THE HORIZONTAL DATUM IS THE NEW HAMPSHIRE STATE PLANE COORDINATE SYSTEM, NAD 83.</p> <p>FOR ASSESSMENT PURPOSES NOT TO BE USED FOR CONVEYANCES</p> <p>REVISED APRIL 1, 2023</p>	<p>SCALE</p> <p>1"=200'</p> <p>METERS 50 0 50 100 150 200 250 300 350 400 450 500 550</p> <p>FEET 100 0 100 200 300 400 500 600 700 800 900 1000 1200 1400 1600 1800</p>	<p>MAP NOTES</p>
---	---	---	-------------------------