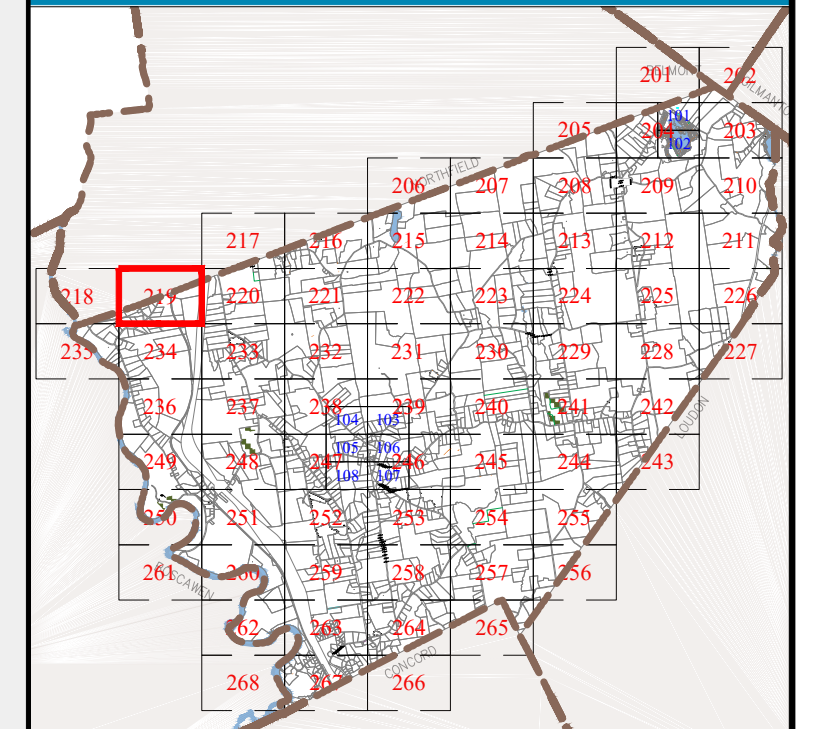


**Town of**  
**CANTERBURY**  
 Merrimack County  
 New Hampshire

**LEGEND**

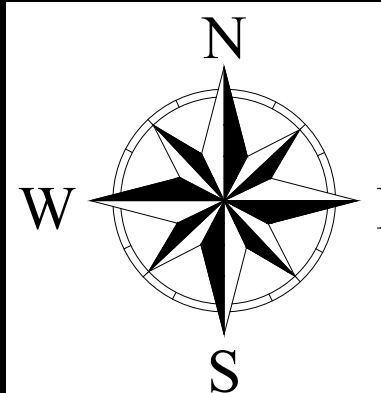
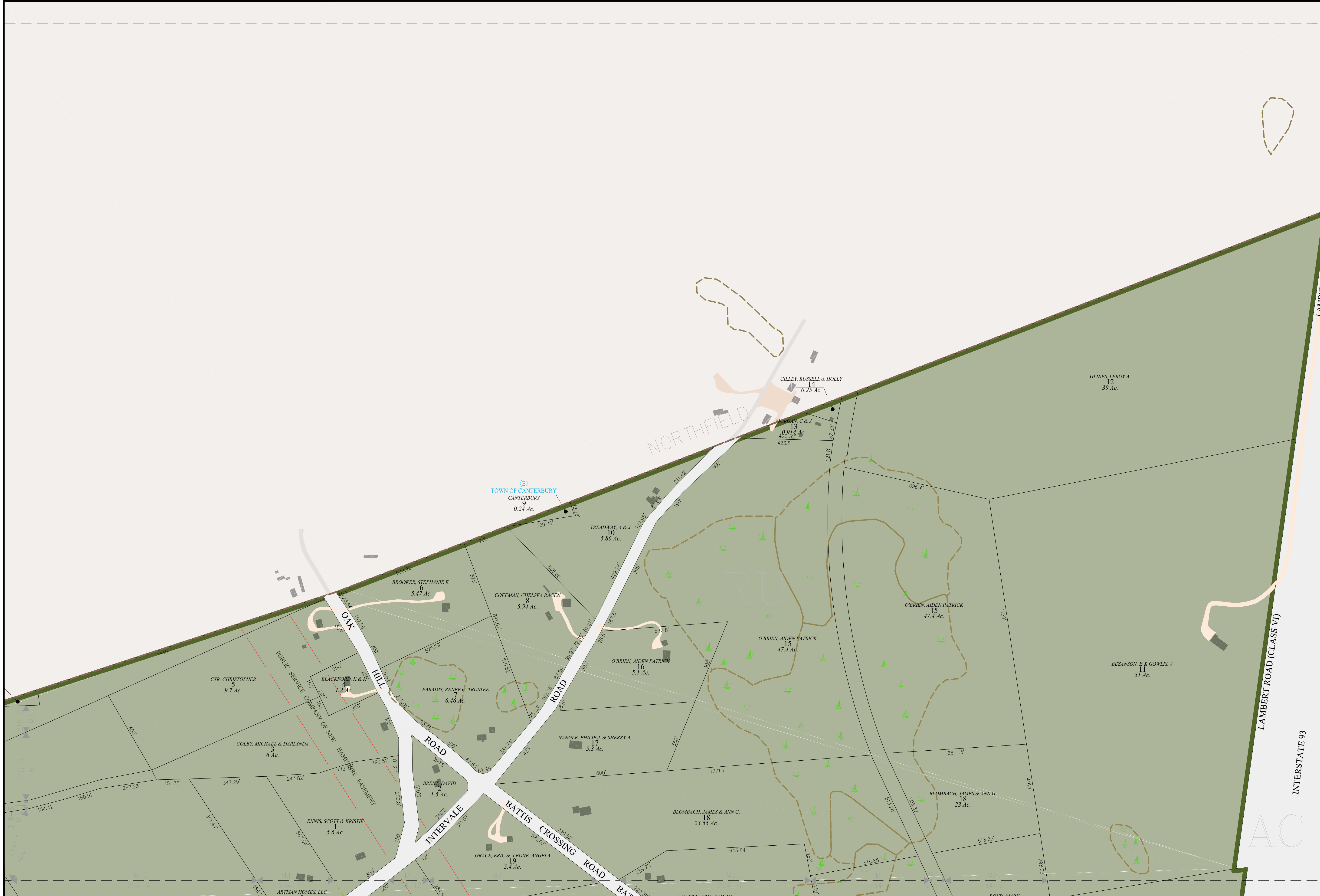
Lot-Sub	12-1
Acreage	200 AcS
S-Survey C-Calculated	
Dimensions (Feet)	150.00'
Private & ROW Access	
River	
Wetland	
Lake or Pond	
Transmission Line	
Conservation Easement	
Exempt Property	
Town Owned Land	
Open Space	
Structure	
<b>ZONING</b>	
Residential	
Rural	
Agricultural-Conservation	
Commercial	
Industrial	
Natural Resource	
Center Historic District	
Shaker Historic Overlay District	
Shaker Village Museum Preservation District	

**MAP INDEX**

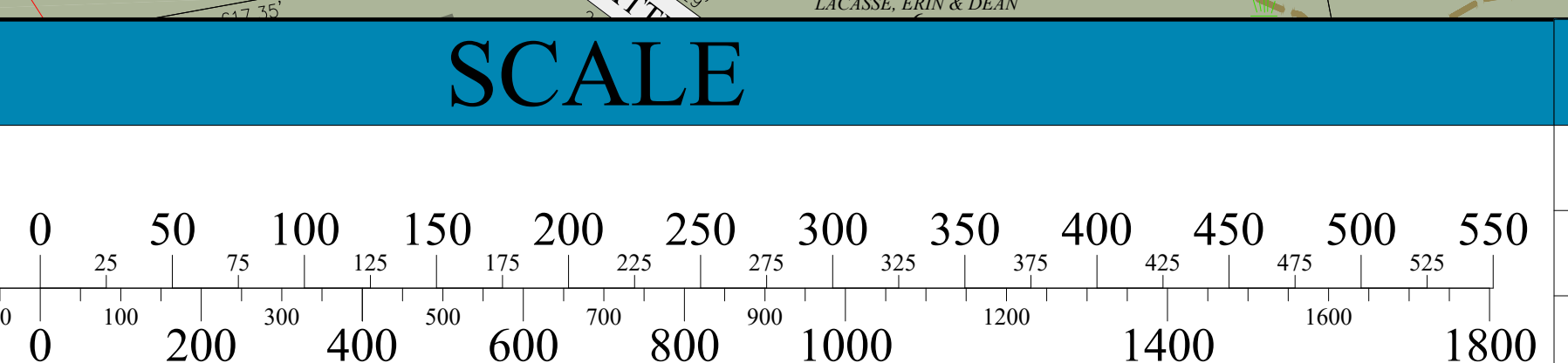


**MAP NUMBER**

219



THE HORIZONTAL DATUM IS THE NEW HAMPSHIRE STATE  
 PLANE COORDINATE SYSTEM, NAD 83.  
 FOR ASSESSMENT PURPOSES  
 NOT TO BE USED FOR CONVEYANCES  
**REVISED APRIL 1, 2023**



MAP NOTES