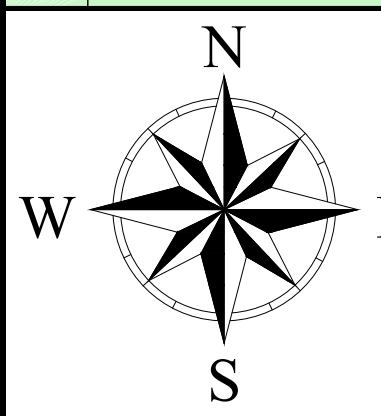
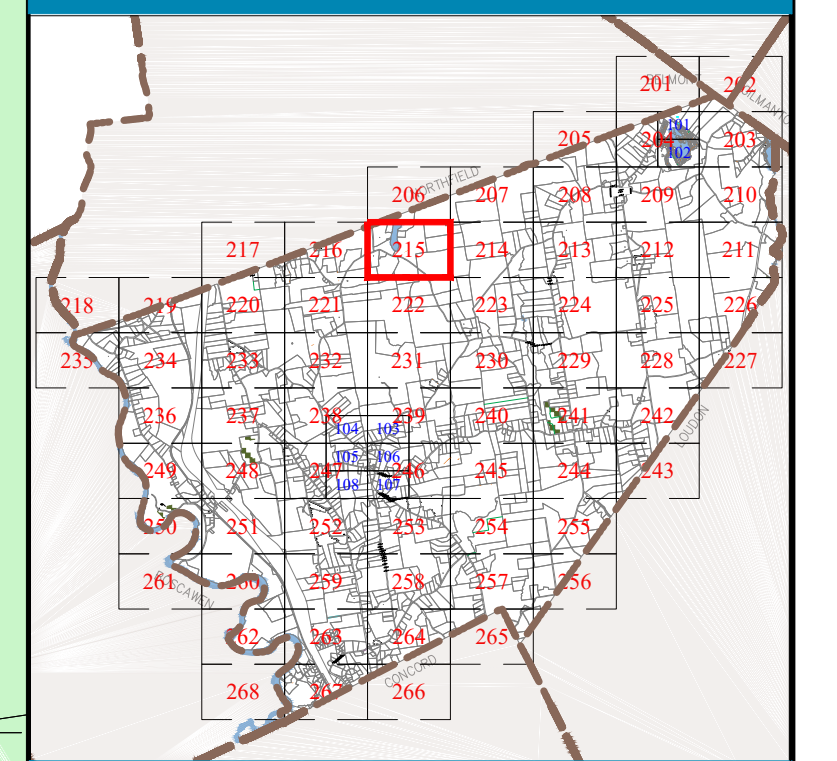
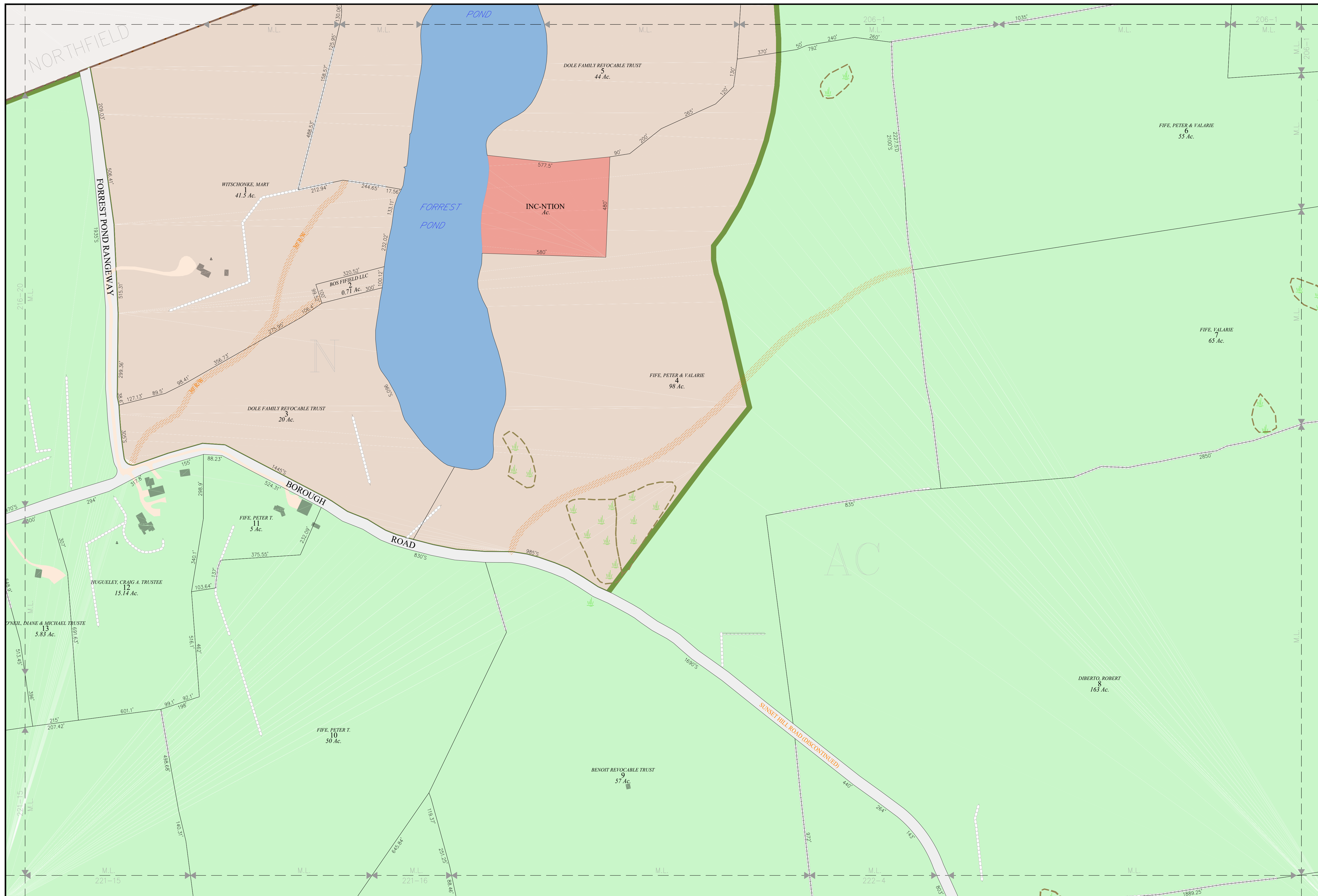


**Town of  
 CANTERBURY**  
 Merrimack County  
 New Hampshire

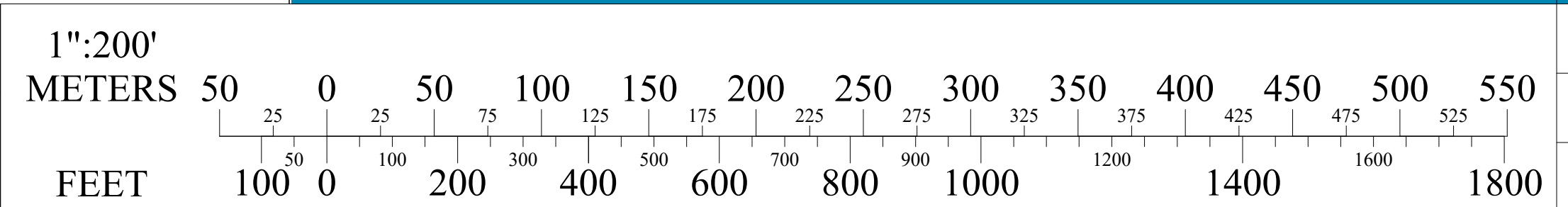
**LEGEND**

- Lot-Sub 12-1
- Acreage 200 AcS
- S-Survey C-Calculated
- Dimensions (Feet) 150.00'
- Private & ROW Access
- River
- Wetland
- Lake or Pond
- Transmission Line
- Conservation Easement
- Exempt Property
- Town Owned Land
- Open Space
- Structure
- ZONING**
- Residential
- Agricultural-Conservation
- Commercial
- Industrial
- Natural Resource
- Center Historic District
- Shaker Historic Overlay District
- Shaker Village Museum Preservation District



THE HORIZONTAL DATUM IS THE NEW HAMPSHIRE STATE PLANE COORDINATE SYSTEM, NAD 83.  
 FOR ASSESSMENT PURPOSES  
 NOT TO BE USED FOR CONVEYANCES  
**REVISED APRIL 1, 2023**

**SCALE**



**MAP NOTES**

**215**