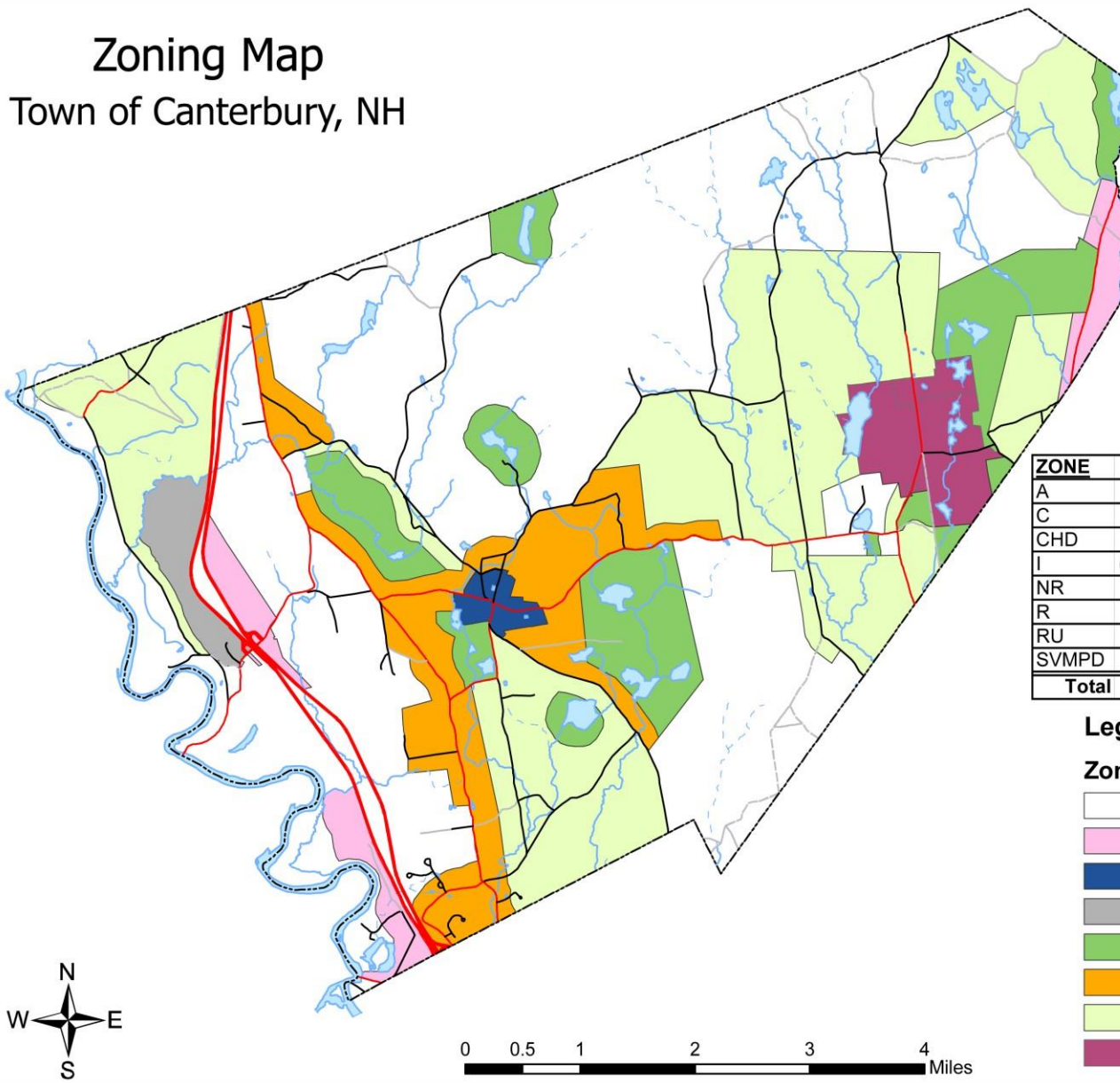


# Zoning Map

## Town of Canterbury, NH



ZONE	Acres	% of Total
A	14,083	49.7%
C	812	2.9%
CHD	181	0.6%
I	(386) Not included	Not included
NR	2,676	9.5%
R	2,363	8.3%
RU	7,379	26.1%
SVMPD	817	2.9%
<b>Total</b>	<b>28,310</b>	<b>100.0%</b>

### Legend

#### Zoning Districts

- A - Agricultural/Conservation
- C - Commercial
- CHD - Center Historic District
- I - Industrial
- NR - Resource Reserve/Natural
- R - Residential
- RU - Rural
- SVMPD Shaker Village