

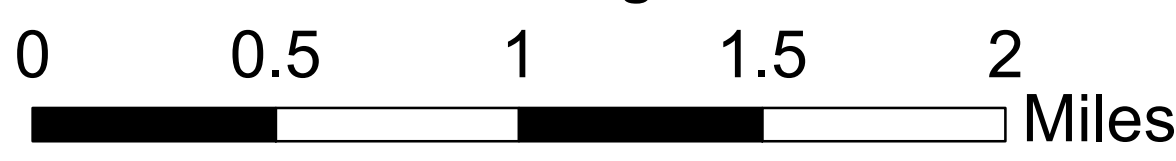
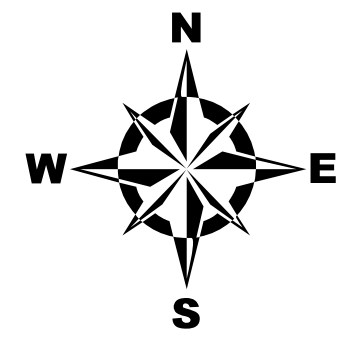
TOWN OF CANTERBURY, NEW HAMPSHIRE

Hazard Mitigation Plan 2017

Map 4: Potential Hazards and Losses

Legend

- | | |
|-----------------------------------|---------------------------------|
| Culvert Condition | Floodplains |
| ■ Excellent | ■ 1% Annual Flood Risk |
| ■ Good | ■ 0.2% Annual Flood Risk |
| ■ Fair | Surface Waters |
| ■ Poor | ■ Lakes and Ponds |
| ■ Critical | ■ Rivers and Streams |
| Electric Utility Districts | ■ Intermittent Streams |
| ■ Eversource | ■ 20' Contour |
| ■ NH Coop | ■ 100' Contour |
| ■ Unital | ■ Power Transmission Line |
| Evacuation Routes | Roads |
| ○ Primary | ■ Interstates |
| ○ Secondary | ■ Class I and II State Highways |
| Area Susceptible to: | ■ Class V Town Maintained Roads |
| ■ Fire Damage | ■ Class VI Unmaintained Roads |
| ■ Flooding | ■ Other Roads/Private |
| ■ Steep Slopes (>15%) | ■ Railroad |
| ■ Town Landfill | ■ Town Boundary |



This map was produced by the Central NH Regional Planning Commission for the Town of Canterbury Hazard Mitigation Plan Update, February 2016. It is intended for planning purposes only.

Funded through NH Homeland Security and Emergency Management and the Federal Emergency Management Agency.

Data Sources: NH GRANIT, NH Dept. of Transportation, FEMA, CNHRPC, Town of Canterbury, Hazard Mitigation Subcommittee Input.

Corrections should be provided to the Town of Canterbury and to CNHRPC.

Central New Hampshire Regional Planning Commission
28 Commercial Street, Suite 3
Concord, NH 03301
603.226.6020
www.cnhrpc.org

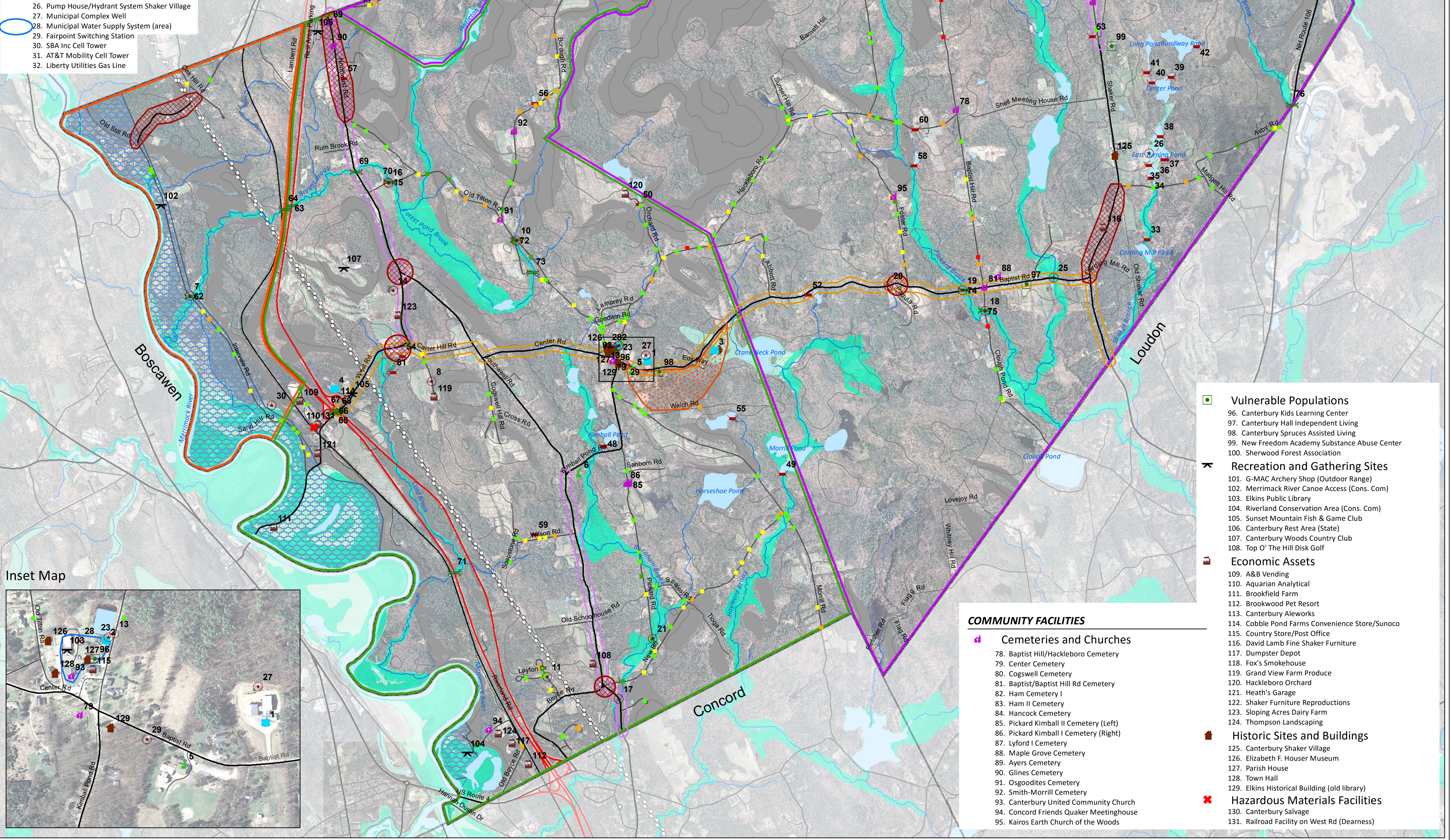
CANTERBURY
1726

FEDERAL EMERGENCY MANAGEMENT AGENCY

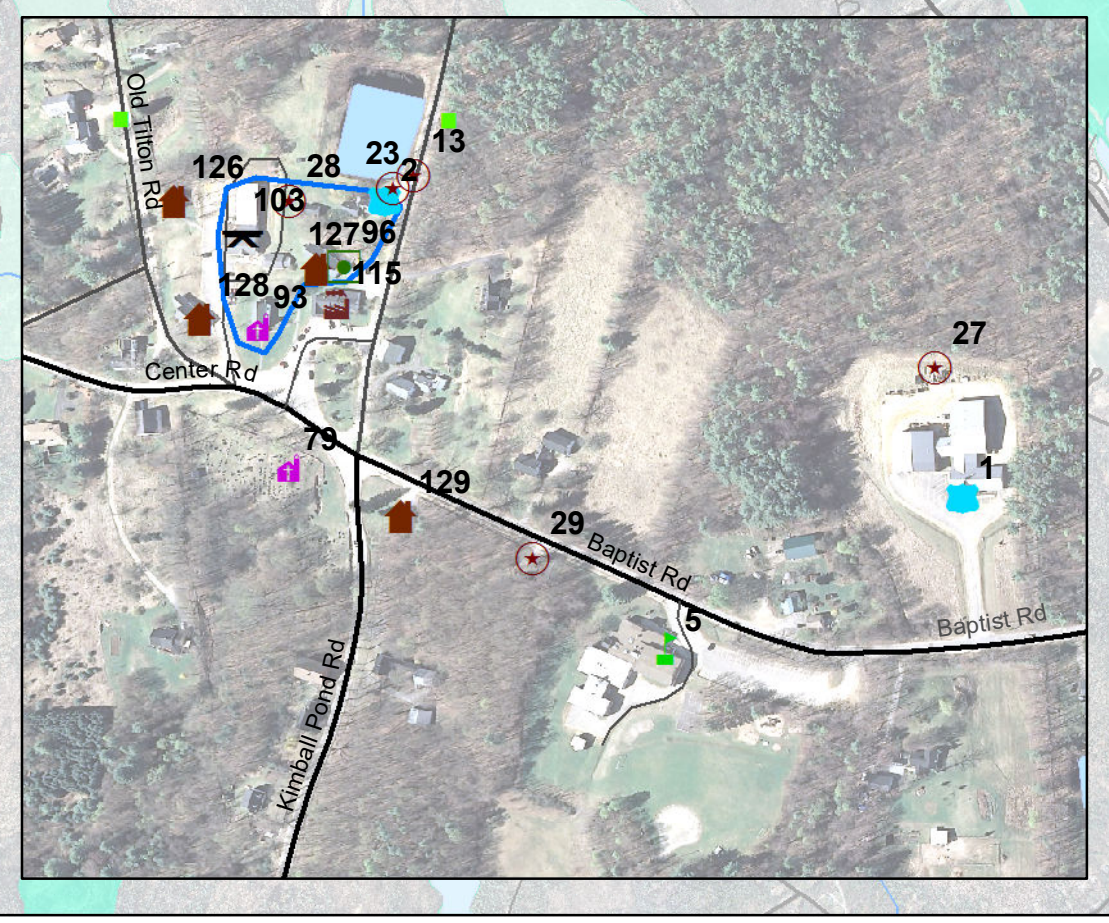
CRITICAL FACILITIES

- | | | |
|--|--|--|
| Essential Facilities | Dams | Bridges |
| 1. Municipal Complex
Police Department
Fire Department
Highway Department | 33. D038.01 Carding Mill Pond Dam, NM
34. D038.02 Sawmill Pond Dam, NM
35. D038.03 Turning Mill Pond Dam, L
36. D038.04 Turning Mill Pond Center Dam
37. D038.05 Turning Mill Pond East Dam
38. D038.06 Factory Pond Dam, NM
39. D038.08 Fountain Pond Center Dam, L
40. D038.09 Fountain Pond North Dike | 62. 060/100 (Town) Intervale Rd
63. 075/113 (State) I-93
64. 075/113 (State) I-93
65. 080/082 (State) I-93 SB
66. 080/082 (State) I-93 SB
67. 081/082 (State) I-93 NB
68. 081/082 (State) I-93 NB
69. 086/117 (State) NH132 |
| 2. Sam Lake House (Town Office)
3. Transfer Station
4. NH DOT Shed | 41. D038.10 North Family Pond South Dike, NM
42. D038.12 Runaway Pond East Dam, L
43. D038.13 Little Pond West Dam
44. D038.14 Little Pond East Dam
45. D038.15 Lyford Pond Dam, S
46. D038.16 Lyford Pond Dike
47. D038.18 New Pond Dam, L
48. D038.19 Kimball Pond Dam
49. D038.20 Morrill Mill Pond Dam, L
50. D038.21 Lower Morrill Pond Dam
51. D038.22 Rocky Pond Outlet Dam
52. D038.24 Wheeler Dam
53. D038.25 Conservation Pond
54. D038.26 Cold Brook, NM
55. D038.27 Fifield Farm Pond Dam, L
56. D038.28 Fire Pond, NM
57. D038.29 Fire Pond Dam, NM
58. D038.32 Great Brook Farm Pond, NM
59. D038.33 Stern Pond
60. D038.34 Leidinger Dam
61. D038.36 Mann Recreation Pond | 70. 091/118 (Town) Randall Rd Municipal Redist
71. 098/058 (State) I-93 SB
72. 110/107 (Town) Old Tilton Rd
73. 111/101 (Town) Clough Tavern Rd Municipal Redist
74. 175/097 (State) Baptist Rd
75. 179/094 (Town) Clough Pond Rd
76. 227/122 (State) NH106
77. 236/156 (State) NH106 |
| Shelters, Schools, and Medical Facilities | Utilities | |
| 5. Canterbury Elementary School
6. Burnham Brook Middle School | 7. Dry Hydrant (45)
8. Dry Hydrant (44)
9. Dry Hydrant (46)
10. Fire Access Water Source at Old Tilton Rd
11. Fire Pond at Cambridge Dr
12. Fire Pond Shore Dr at New Pond
13. Fire Pond at Hackleboro Rd
14. Dry Hydrant at Golfcourse/West Rd
15. Fire Access Water Source at Randall Rd Bk
16. Fire Access Water Source at Randall Rd
17. Fire Access Water Source at Southwest Rd
18. Fire Access Water Source at Clough Pond Rd
19. Fire Access Water at Baptist Rd/Picard Bk
20. Fire Access Water Source at Baptist Rd
21. Fire Access Water Source at Picard Rd
22. Fire Access Water Source at Bean Hill Rd
23. Dry Hydrant at Sam Lake House
24. Dry Hydrant at Brewery
25. Dry Hydrant at Padula
26. Pump House/Hydrant System Shaker Village
27. Municipal Complex Well
28. Municipal Water Supply System (area)
29. Fairpoint Switching Station
30. SBA Inc Cell Tower
31. AT&T Mobility Cell Tower
32. Liberty Utilities Gas Line | |

Hazard Class: NM = Non-Menace, L = Low, S = Significant



Inset Map



- | | |
|---------------------------------------|--|
| Vulnerable Populations | 96. Canterbury Kids Learning Center
97. Canterbury Hall Independent Living
98. Canterbury Spruces Assisted Living
99. New Freedom Academy Substance Abuse Center
100. Sherwood Forest Association |
| Recreation and Gathering Sites | 101. G-MAC Archery Shop (Outdoor Range)
102. Merrimack River Canoe Access (Cons. Com)
103. Elkins Public Library
104. Riverland Conservation Area (Cons. Com)
105. Sunset Mountain Fish & Game Club
106. Canterbury Rest Area (State)
107. Canterbury Woods Country Club
108. Top O' The Hill Disk Golf |
| Economic Assets | 109. A&B Vending
110. Aquarian Analytical
111. Brookfield Farm
112. Brookwood Pet Resort
113. Canterbury Aleworks
114. Cobble Pond Farms Convenience Store/Sunoco
115. Country Store/Post Office
116. David Lamb Fine Shaker Furniture
117. Dumpster Depot
118. Fox's Smokehouse
119. Grand View Farm Produce
120. Hackleboro Orchard
121. Heath's Garage
122. Shaker Furniture Reproductions
123. Sloping Acres Dairy Farm
124. Thompson Landscaping |
| Historic Sites and Buildings | 125. Canterbury Shaker Village
126. Elizabeth F. Houser Museum
127. Parish House
128. Town Hall
129. Elkins Historical Building (old library) |
| Hazardous Materials Facilities | 130. Canterbury Salvage
131. Railroad Facility on West Rd (Dearness) |

COMMUNITY FACILITIES

- Cemeteries and Churches**
- 78. Baptist Hill/Hackleboro Cemetery
 - 79. Center Cemetery
 - 80. Cogswell Cemetery
 - 81. Baptist/Baptist Hill Rd Cemetery
 - 82. Ham Cemetery I
 - 83. Ham II Cemetery
 - 84. Hancock Cemetery
 - 85. Pickard Kimball II Cemetery (Left)
 - 86. Pickard Kimball I Cemetery (Right)
 - 87. Lyford I Cemetery
 - 88. Maple Grove Cemetery
 - 89. Ayers Cemetery
 - 90. Glines Cemetery
 - 91. Osgoodies Cemetery
 - 92. Smith-Morrill Cemetery
 - 93. Canterbury United Community Church
 - 94. Concord Friends Quaker Meetinghouse
 - 95. Kairos Earth Church of the Woods