

TOWN OF CANTERBURY, NEW HAMPSHIRE Hazard Mitigation Plan 2017

Map 3: Critical and Community Facilities

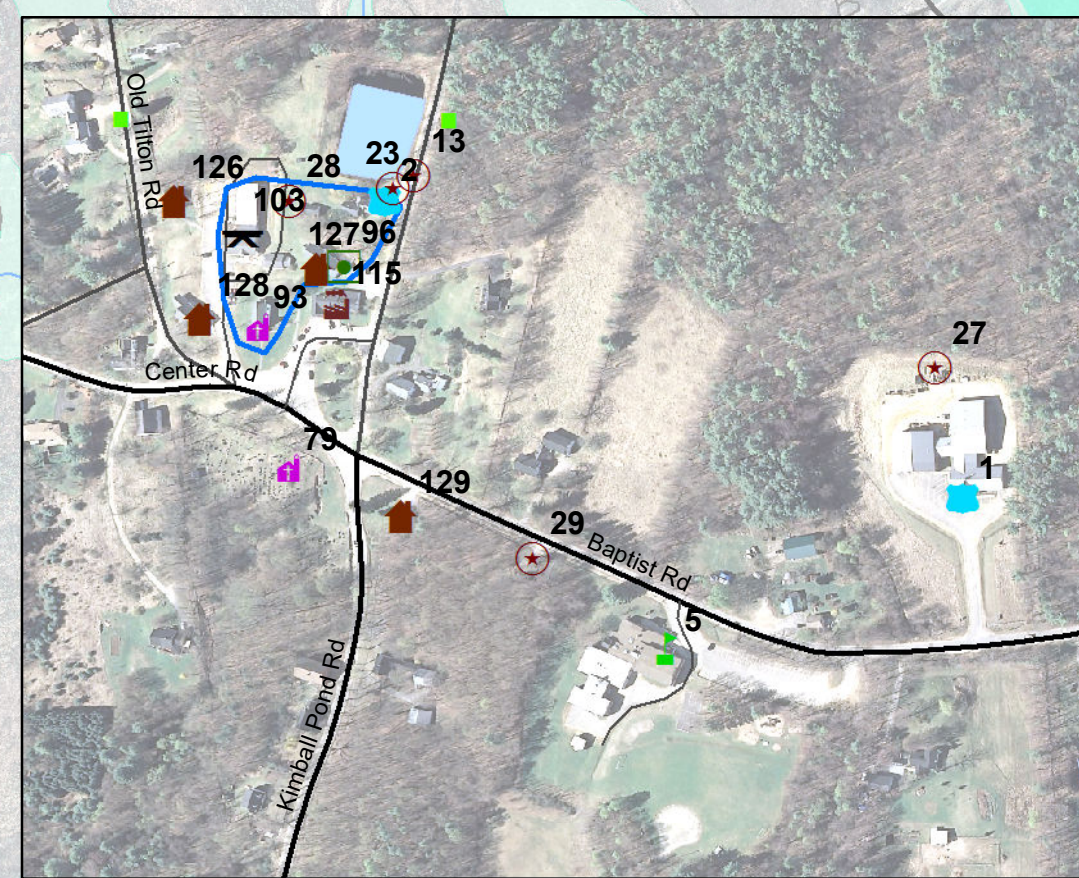
Legend

- Culvert Condition**
- Excellent
 - Good
 - Fair
 - Poor
 - Critical
- Electric Utility Districts**
- Eversource
 - NH Coop
 - Unitil
- Floodplains**
- 1% Annual Flood Risk
 - 0.2% Annual Flood Risk
- Surface Waters**
- Lakes and Ponds
 - Rivers and Streams
 - Intermittent Streams
- Roads**
- Interstates
 - Class I and II State Highways
 - Class V Town Maintained Roads
 - Class VI Unmaintained Roads
 - Other Roads/Private
 - Railroad
 - Town Boundary
- Power Transmission Line**
- School**
- Utilities**
- Dams**
- Bridges**

CRITICAL FACILITIES

- Essential Facilities**
- Municipal Complex
 - Police Department
 - Fire Department
 - Highway Department
 - Sam Lake House (Town Office)
 - Transfer Station
 - NH DOT Shed
 - Canterbury Elementary School
 - Burnham Brook Middle School
- School**
- Canterbury Elementary School
 - Burnham Brook Middle School
- Utilities**
- Dry Hydrant (45)
 - Dry Hydrant (44)
 - Dry Hydrant (46)
 - Fire Access Water Source at Old Tilton Rd
 - Fire Pond at Cambridge Dr
 - Fire Pond Shore Dr at New Pond
 - Fire Pond at Hackleboro Rd
 - Dry Hydrant at Golfcourse/West Rd
 - Fire Access Water Source at Randall Rd Bk
 - Fire Access Water Source at Randall Rd
 - Fire Access Water Source at Southwest Rd
 - Fire Access Water Source at Clough Pond Rd
 - Fire Access Water at Baptist Rd/Picard Bk
 - Fire Access Water Source at Baptist Rd
 - Fire Access Water Source at Picard Rd
 - Dry Hydrant at Sam Lake House
 - Dry Hydrant at Brewery
 - Dry Hydrant at Padula
 - Pump House/Hydrant System Shaker Village
 - Municipal Complex Well
 - Municipal Water Supply System (area)
 - Fairpoint Switching Station
 - SBA Inc Cell Tower
 - AT&T Mobility Cell Tower
 - Liberty Utilities Gas Line
- Dams**
- D038.01 Carding Mill Pond Dam, NM
 - D038.02 Sawmill Pond Dam, NM
 - D038.03 Turning Mill Pond Dam, L
 - D038.04 Turning Mill Pond Center Dam
 - D038.05 Turning Mill Pond East Dam
 - D038.06 Factory Pond Dam, NM
 - D038.08 Fountain Pond Center Dam, L
 - D038.09 Fountain Pond North Dike
 - D038.10 North Family Pond South Dike, NM
 - D038.12 Runaway Pond East Dam, L
 - D038.13 Little Pond West Dam
 - D038.14 Little Pond East Dam
 - D038.15 Lyford Pond Dam, S
 - D038.16 Lyford Pond Dam, L
 - D038.18 New Pond Dam, L
 - D038.19 Kimball Pond Dam
 - D038.20 Morrill Mill Pond Dam, L
 - D038.21 Lower Morrill Pond Dam
 - D038.22 Rocky Pond Outlet Dam
 - D038.24 Wheeler Dam
 - D038.25 Conservation Pond
 - D038.26 Cold Brook, NM
 - D038.27 Fifield Farm Pond Dam, L
 - D038.28 Fire Pond, NM
 - D038.29 Fire Pond Dam, NM
 - D038.32 Great Brook Farm Pond, NM
 - D038.33 Stern Pond
 - D038.34 Leidinger Dam
 - D038.36 Mann Recreation Pond
- Bridges**
- 060/100 (Town) Intervale Rd
 - 075/113 (State) I-93
 - 075/113 (State) I-93
 - 080/082 (State) I-93 SB
 - 080/082 (State) I-93 SB
 - 081/082 (State) I-93 NB
 - 081/082 (State) I-93 NB
 - 086/117 (State) NH132
 - 091/118 (Town) Randall Rd Municipal Redist
 - 098/058 (State) I-93 SB
 - 110/107 (Town) Old Tilton Rd
 - 111/101 (Town) Clough Tavern Rd Municipal Redist
 - 175/097 (State) Baptist Rd
 - 179/094 (Town) Clough Pond Rd
 - 227/122 (State) NH106
 - 236/156 (State) NH106
- Hazard Class: NM = Non-Menace, L = Low, S = Significant**

Inset Map



This map was produced by the Central NH Regional Planning Commission for the Town of Canterbury Hazard Mitigation Plan Update, February 2016. It is intended for planning purposes only.

Funded through NH Homeland Security and Emergency Management and the Federal Emergency Management Agency.

Data Sources: NH GRANIT, NH Dept. of Transportation, FEMA, CNHRPC, Town of Canterbury, Hazard Mitigation Subcommittee Input.

Corrections should be provided to the Town of Canterbury and to CNHRPC.

Central New Hampshire
Regional Planning
Commission
28 Commercial Street, Suite 3
Concord, NH 03301
603.226.6020
www.cnhrpc.org



FEMA

COMMUNITY FACILITIES

Cemeteries and Churches

- Baptist Hill/Hackleboro Cemetery
- Center Cemetery
- Cogswell Cemetery
- Baptist/Baptist Hill Rd Cemetery
- Ham Cemetery I
- Ham II Cemetery
- Pickard Kimball II Cemetery (Left)
- Pickard Kimball I Cemetery (Right)
- Lyford I Cemetery
- Maple Grove Cemetery
- Ayers Cemetery
- Glines Cemetery
- Osgoodies Cemetery
- Smith-Morrill Cemetery
- Canterbury United Community Church
- Concord Friends Quaker Meetinghouse
- Kairos Earth Church of the Woods

Vulnerable Populations

- Canterbury Kids Learning Center
- Canterbury Hall Independent Living
- Canterbury Spruces Assisted Living
- New Freedom Academy Substance Abuse Center
- Sherwood Forest Association

Recreation and Gathering Sites

- G-MAC Archery Shop (Outdoor Range)
- Merrimack River Canoe Access (Cons. Com)
- Elkins Public Library
- Riverland Conservation Area (Cons. Com)
- Sunset Mountain Fish & Game Club
- Canterbury Rest Area (State)
- Canterbury Woods Country Club
- Top O' The Hill Disk Golf

Economic Assets

- A&B Vending
- Aquarian Analytical
- Brookfield Farm
- Brookwood Pet Resort
- Canterbury Aleworks
- Cobble Pond Farms Convenience Store/Sunoco
- Country Store/Post Office
- David Lamb Fine Shaker Furniture
- Dumpster Depot
- Fox's Smokehouse
- Grand View Farm Produce
- Hackleboro Orchard
- Heath's Garage
- Shaker Furniture Reproductions
- Sloping Acres Dairy Farm
- Thompson Landscaping

Historic Resource

- Canterbury Shaker Village
- Elizabeth F. Houser Museum
- Parish House
- Town Hall
- Elkins Historical Building (old library)

Hazardous Materials

- Canterbury Salvage
- Railroad Facility on West Rd (Deerness)