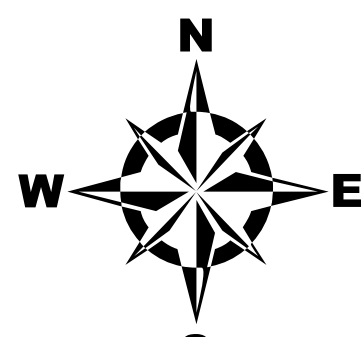


TOWN OF CANTERBURY, NEW HAMPSHIRE Hazard Mitigation Plan 2017

Map 1: Potential Hazards

Legend

- | | |
|-----------------------------------|---------------------------------|
| Culvert Condition | Floodplains |
| ■ Excellent | ■ 1% Annual Flood Risk |
| ■ Good | ■ 0.2% Annual Flood Risk |
| ■ Fair | ■ Lakes and Ponds |
| ■ Poor | ■ Rivers and Streams |
| ■ Critical | ■ Intermittent Streams |
| ■ Dams | Topographic Contours |
| ■ Bridges | ○ 20' Contour |
| Electric Utility Districts | ○ 100' Contour |
| ■ Eversource | ○ Power Transmission Line |
| ■ NH Coop | ○ Railroad |
| ■ Unital | Roads |
| Evacuation Routes | ○ Interstates |
| ○ Primary | ○ Class I and II State Highways |
| ○ Secondary | ○ Class V Town Maintained Roads |
| Area Susceptible to: | ○ Class VI Unmaintained Roads |
| ■ Fire Damage | ○ Other Roads/Private |
| ■ Flooding | ○ Town Boundary |
| ■ Steep Slopes (>15%) | |
| ■ Town Landfill | |



This map was produced by the Central NH Regional Planning Commission for the Town of Canterbury Hazard Mitigation Plan Update, February 2016. It is intended for planning purposes only.

Funded through NH Homeland Security and Emergency Management and the Federal Emergency Management Agency.

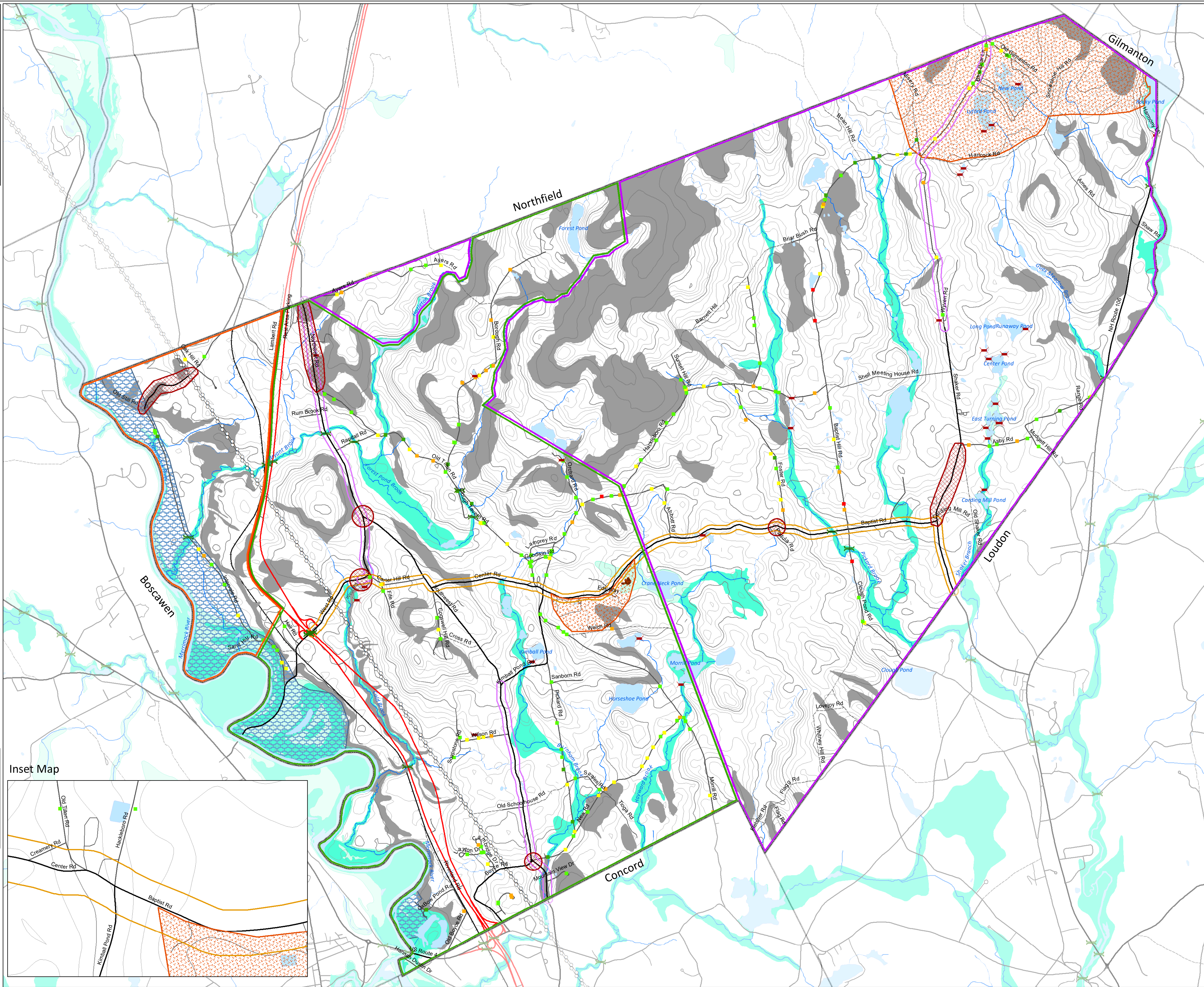
Data Sources: NH GRANIT, NH Dept. of Environmental Services, NH Dept. of Transportation, FEMA, CNHRPC, Town of Canterbury, Hazard Mitigation Subcommittee Input.

Corrections should be provided to the Town of Canterbury and to CNHRPC.

Central New Hampshire
Regional Planning
Commission
28 Commercial Street, Suite 3
Concord, NH 03301
603.226.6020
www.cnhrpc.org



FEMA



Inset Map

