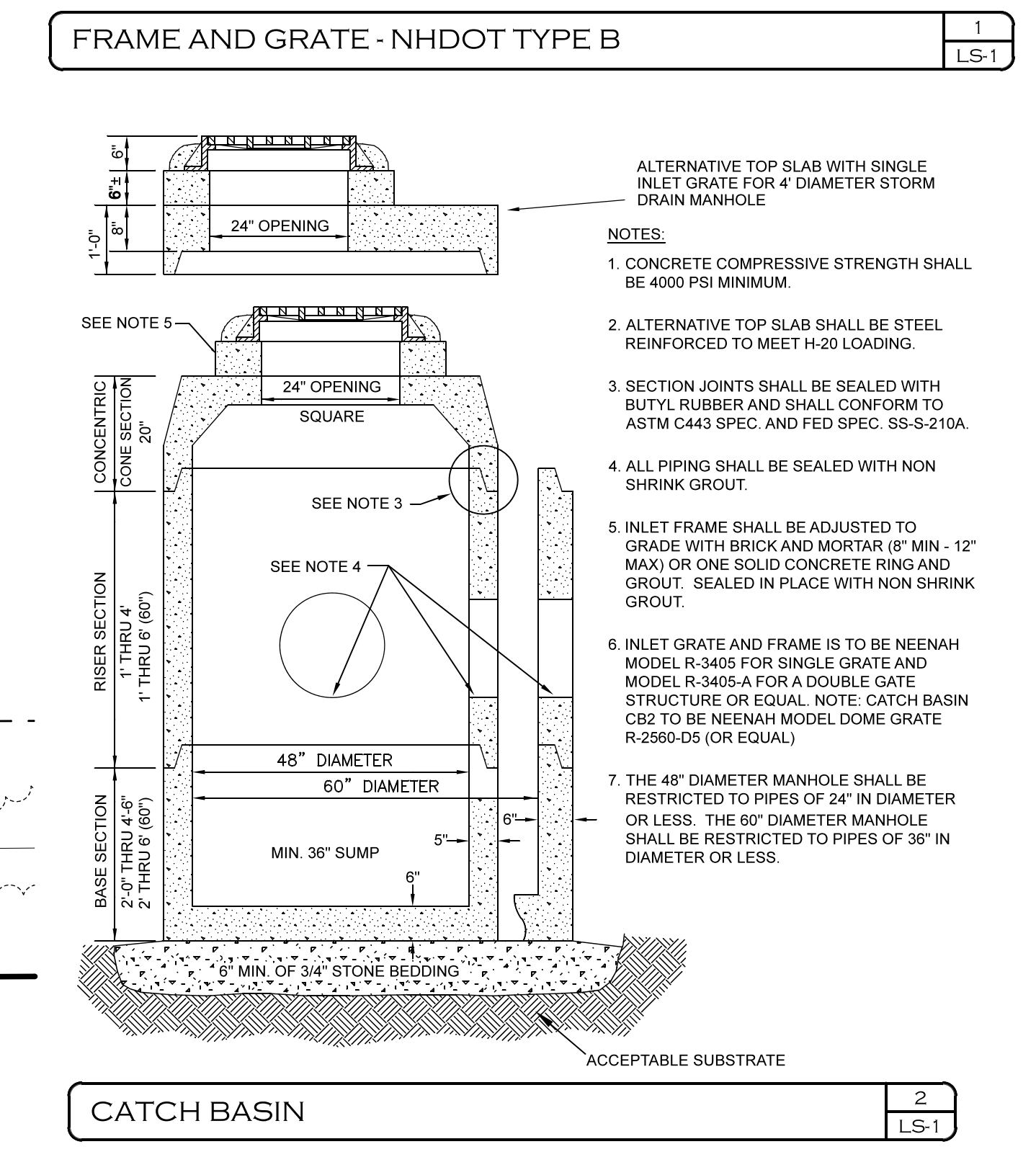
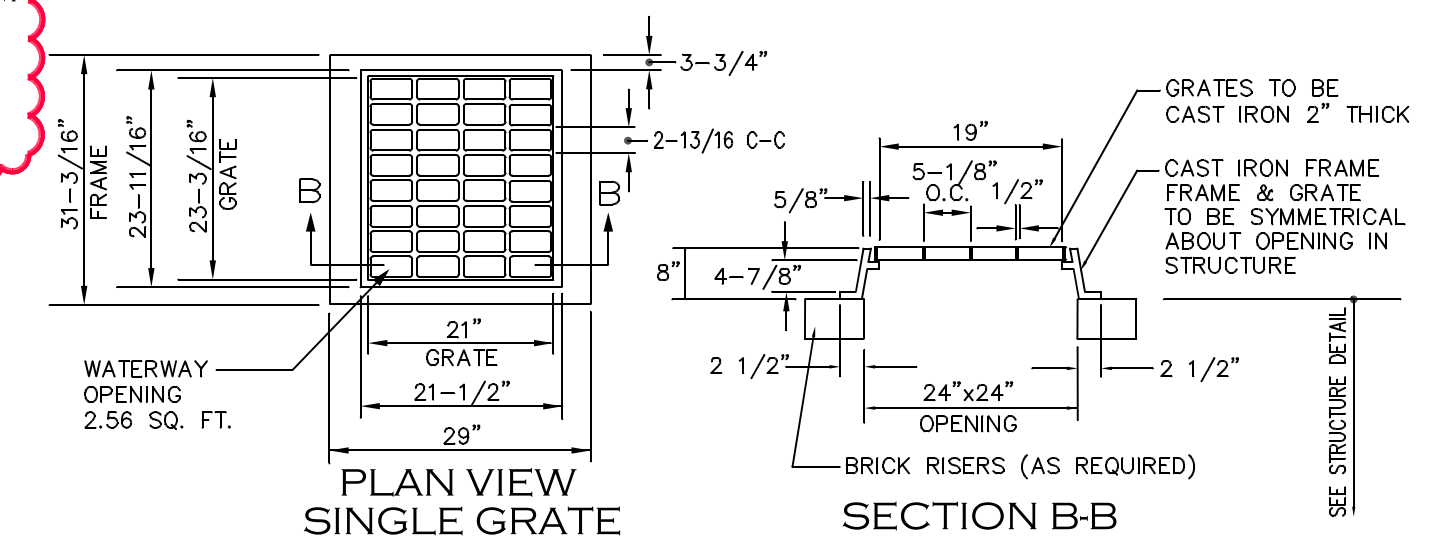
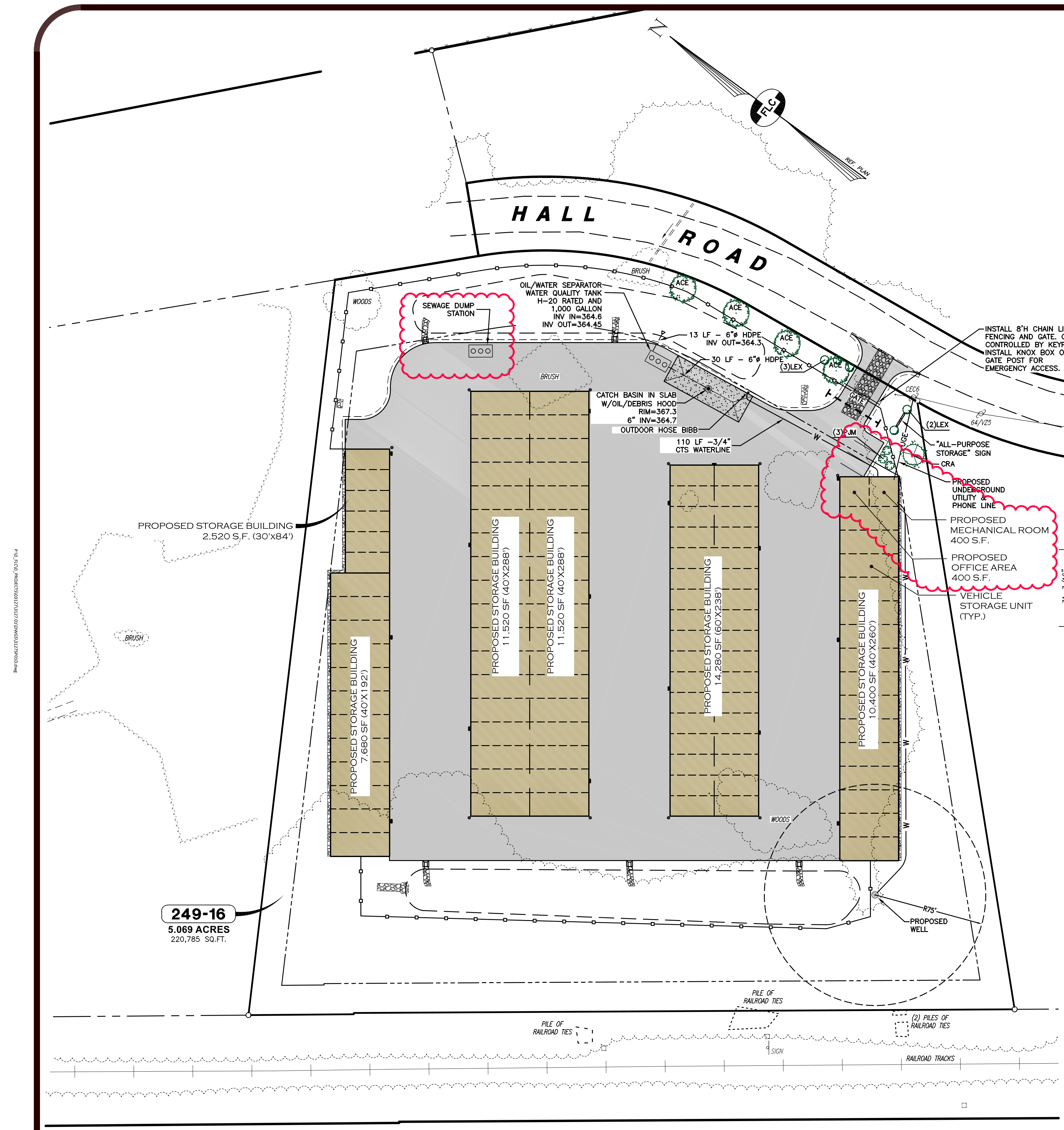


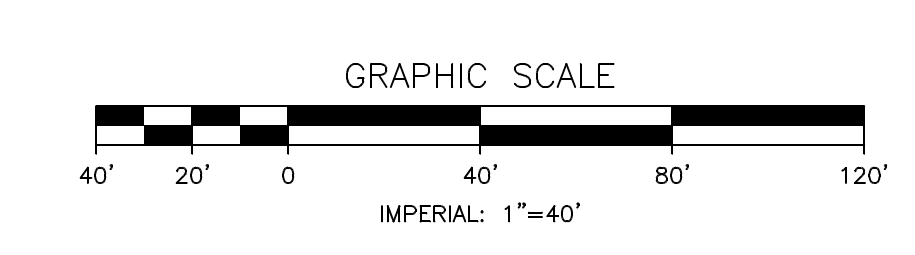
PLANT SYMBOLS	PLANT LIST (OR EQUAL)	QTY.
	ACER RUBRUM ARMSTRONG (ARMSTRONG MAPLE)	(4) 2.5"-3" CAL.
	CRATAEGUS VIRIDIS (WINTER KING HAWTHORN)	(1) 3"-3.5" CAL.
	ILEX MESURVIAE "BLUE PRINCE" (MALE HOLLY)	(5) 2.5"-3"
	RHOD. "P.J.M." COMP. CLONE (COMPACT RHODODENDRON)	(3) 18"-24"

- LANDSCAPING NOTES:**
- THE LANDSCAPE CONTRACTOR IS RESPONSIBLE FOR CONTACTING DIG-SAFE AND FOR VERIFICATION OF ALL UTILITIES AND SHALL NOTIFY THE OWNERS REPRESENTATIVE OF ANY CONFLICTS PRIOR TO COMMENCING.
  - EXISTING TREES TO REMAIN SHALL BE PRESERVED AND PROTECTED DURING CONSTRUCTION.
  - UNTIL ALL GRADING AND CONSTRUCTION HAS BEEN COMPLETED WITHIN THE IMMEDIATE AREA NO PLANT MATERIAL SHALL BE INSTALLED.
  - UNLESS OTHERWISE NOTED OR APPROVED, ALL TREES MUST BE BALLED AND BURLAPPED.
  - ALL PLANT MATERIALS INSTALLED SHALL MEET OR EXCEED THE SPECIFICATIONS OF "THE AMERICAN STANDARDS FOR NURSERY STOCK" BY THE AMERICAN ASSOCIATION OF NURSERYMEN.
  - ANY PROPOSED PLANT MATERIAL SUBSTITUTIONS MUST BE APPROVED BY THE OWNER'S REPRESENTATIVE.
  - ALL PLANT MATERIAL SHALL BE GUARANTEED BY THE INSTALLER FOR ONE YEAR FOLLOWING DATE OF ACCEPTANCE.
  - IN AREAS OF STONE MULCH LAY 6 MIL SHEETS OF "MSQUEEN" TYPE POLYETHYLENE ON COMPACTED SUBGRADE BEFORE PLACING STONE, MINIMUM 6" OVERLAP. PERFORATE SHEETING IN PLANTING BEDS BEFORE PLACING STONE.
  - UNLESS OTHERWISE NOTED LOAM AND SEED ALL DISTURBED AREAS WITH A MINIMUM 4" OF SUITABLE LOAM. SLOPES GREATER THAN 3:1 SHALL BE PROTECTED WITH AN EROSION CONTROL BLANKET. SEE SITE PLAN.
  - WHERE APPLICABLE, THE CONTRACTOR SHALL HAVE ALL FALL TRANSPANTING HAZARD PLANTS DUG IN THE SPRING AND STORED FOR FALL PLANTING.
  - PLANTS SHALL BE INSTALLED WITHIN ONE YEAR OF COMMENCEMENT OF CONSTRUCTION
  - ALL LANDSCAPING SHALL BE LOCATED AND MAINTAINED SO AS NOT TO IMPACT THE LINES OF SIGHT AT THE ENTRANCE AND INTERNAL INTERSECTIONS.
  - ALL LANDSCAPED AREAS WILL BE MAINTAINED TO HAVE A SUFFICIENT AMOUNT OF WATER TO MAINTAIN VIABILITY EITHER BY IRRIGATION OR BY OTHER MEANS.
  - PROPOSED PLANTINGS SHALL NOT CONFLICT WITH SNOW STORAGE AREAS, LIGHT FIXTURES OR UNDERGROUND UTILITIES.

- UTILITY NOTES:**
- THE SITE WILL HAVE SECURITY CAMERAS INSTALLED AND MANAGED BY PATRIOT HOLDINGS.
  - THE PRIVATE WELL WILL SUPPLY WATER TO THE UTILITY ROOM, WHICH WILL BE HEATED. WATER WILL RUN FROM THE UTILITY ROOM TO THE OUTDOOR WASH STATION.
  - THE WASH STATION WATER WILL DRAIN TO AN OIL WATER SEPARATOR AND INTO A HOLDING TANK. THE PLANS AND DETAILS FOR THIS SETUP WILL BE PERMITTED WITH WHDES SUBSURFACE BUREAU.
  - THE ENCLOSED BUILDINGS SHALL HAVE AN ADDRESSIBLE FIRE ALARM PANEL WITH AN AUTO-DIALER TO NOTIFY THE FIRE DEPARTMENT. SMOKE DETECTORS SHALL BE INSTALLED PER FIRE CODE AND BE ADDRESSIBLE.
  - ALL UTILITIES ON SITE WILL BE INSTALLED UNDERGROUND.
  - ALL ELECTRICAL INSTALLATION SHALL MEET THE PROVIDERS SPECIFICATIONS AND ELECTRICAL CODE. POWER WILL BE USED ON SITE FOR THE WATER EQUIPMENT, LIGHTING, AND OUTLETS IN THE BUILDINGS.



SEE GRADING & DRAINAGE PLAN FOR GENERAL CONSTRUCTION NOTES



REV.	DATE	DESCRIPTION	C/O	DR	CK
B	5/6/24	ADDED PARKING			SJB JEN
A	5/2/23	ADDED INFO ON OIL/WATER SEPARATOR			JEN CEB

**LANDSCAPING & UTILITIES PLAN**

**TAX MAP 249 LOT 16**  
**(HALL ROAD)**

**CANTERBURY, NEW HAMPSHIRE**

PREPARED FOR:  
**PATRIOT HOLDINGS, LLC**  
4007 DEAN MARTIN DRIVE, LAS VEGAS, NV 89103

SCALE: 1"=40' MAY 24, 2022

Surveying ♦ Engineering ♦ Land Planning ♦ Permitting ♦ Septic Designs

**FIELDSTONE**  
**LAND CONSULTANTS, PLLC**

206 Elm Street, Milford, NH 03055  
Phone: (603) 672-5456 Fax: (603) 413-5456  
www.FieldstoneLandConsultants.com